

12V Thermostat

Three Wire Communication

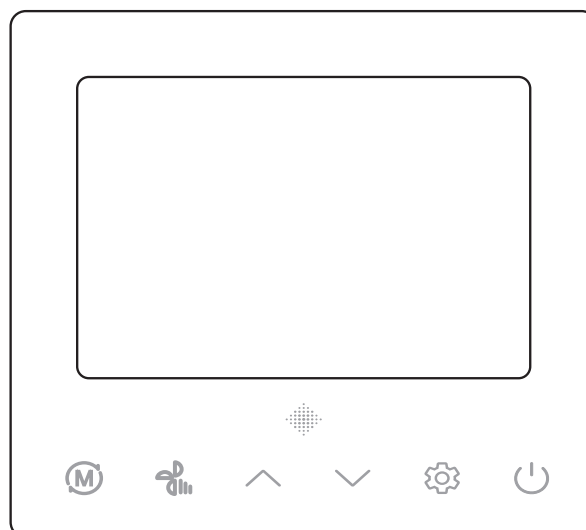
Installation and Owner's Manual

PIONEER®

Model:
TST-DYC1-RS485

Compatible with:
• DYC-18

Product Series



Important Notice:

Read this manual carefully before installing or operating your 12V Thermostat. Be sure to save this manual for future reference.



REV250528

Table of Contents

0

1. About This Manual	2
2. Safety Precautions	3
3. Installation	4
4. Controller Overview	8
5. User Guide	9
6. DIP Switch	15
7. Error Codes	16
8. Download App	18
9. Activate App	19
10. Register App	20
11. Log into App	22
12. Forgot Password	23
13. Adding Devices	24
14. Main Control Interface	26
15. App Functions	27
16. Device Details/Management	37
17. Share Device	38
18. Account Profile Settings	39
19. Home (Family) Management	40

About This Manual

1

This manual provides important safety information and operating instructions for the 12V Thermostat. To ensure proper use and optimal performance, read this manual carefully before operating the unit.

For future reference, keep this manual in a safe and accessible location.

Note that the images included in this manual are for illustrative purposes only. The appearance of your thermostat may vary slightly depending on the specific model. In all cases, the actual product takes precedence.

Safety Precautions

2

Warning

- The distributor or qualified professionals must install the product.
- Untrained individuals who install this product may cause improper setup, electric shock, or fire.
- Always follow the instructions in this manual.
- Incorrect installation can cause electric shock or fire.
- Professionals must also carry out the reinstallation.
- **Do not uninstall the unit arbitrarily**
Improper procedures for uninstalling the unit can cause the air conditioning system to malfunction, overheat, or risk fire.

Note

- Do not install the unit in areas where flammable gases may leak. If flammable gas accumulates near the thermostat, it could cause a fire.
- Do not operate the unit with wet hands or allow water to enter the thermostat. Doing so may cause electric shock.
- Ensure the wiring is compatible with the current rating of the thermostat. Mismatched wiring may cause electric leakage, overheating, or fire. Use only the specified cable types for wiring. Do not apply excessive force to terminals. Doing so may damage the wires, leading to overheating or fire.

Safety Precautions

Read the safety precautions carefully before installation. Follow this important content for your safety.



Warning:

This indicates it may cause death or serious injury for the improper operation.



Notes:

- Do not install the wire controller in damp or direct sunlight places.
- Do not hit, throw, and frequently disassemble the wire controller.
- Do not operate the wire controller with wet hands. Do not put any fluids into the wire controller.
- Do not dismantle the wire controller without authorization. Consult after-sales maintenance personnel if you have a problem.
- To prevent water and dust from entering the wire controller, use the wire controller normally. Dismantle the wire controller when performing indoor decoration and maintenance.

Installation and Disassembly of the Wire Controller

1. The Installation Position and Requirements of the Wire Controller

- 1) Do not install the wire controller in damp or direct sunlight places.
- 2) Do not install the wire controller in a location near high temperatures or where water can splash.
- 3) To avoid potential interference of a neighbor's identical remote controller, do not install the wire controller facing a window.
- 4) Before installation, cut off the power which is buried in the wall mounting holes.
- 5) Electromagnetic interference can cause abnormal operations. When wiring, follow these instructions to prevent it:
 - A) Ensure the communication line is set correctly, otherwise it will lead to communication failures.
 - B) If the unit is installed in a location that can be influenced by electromagnetic interference, the wire controller signal lines must apply shielded twisted-pair cable.
- 6) The standard accessories required for installation are:
 - A in-wall socket bottom box
 - A controller base plate
 - M4 x 25 screws
 - A control panel

2. The Installation of the Wire Controller

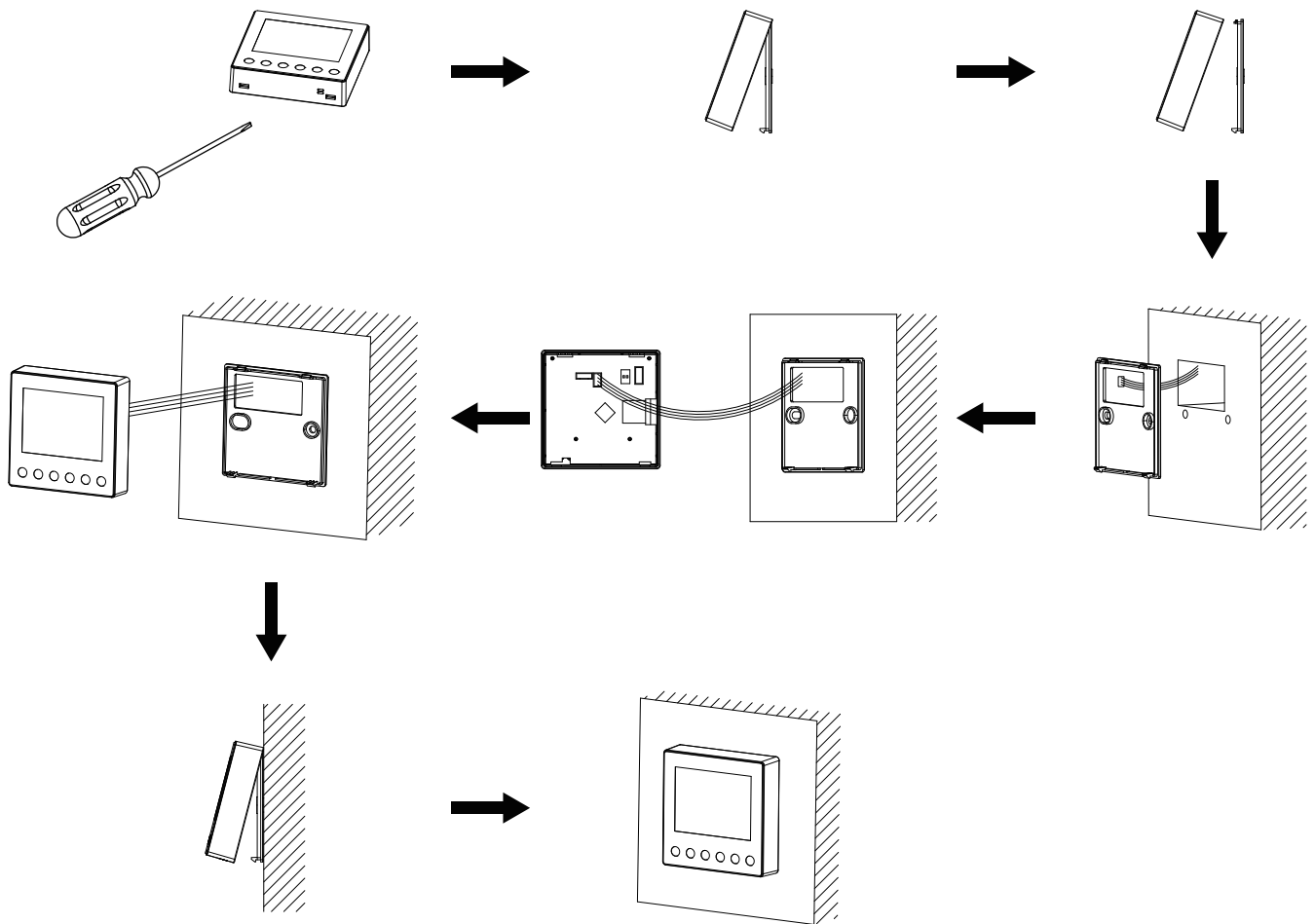
Connect the wire controller signal line by following these steps:

- 1) Lift the interior electrical lid and thread the signal wires through the rubber ring.
- 2) Plug the wire controller's signal lines into the needle base on the indoor machine's circuit boards, then use a cable tie to fasten them securely.

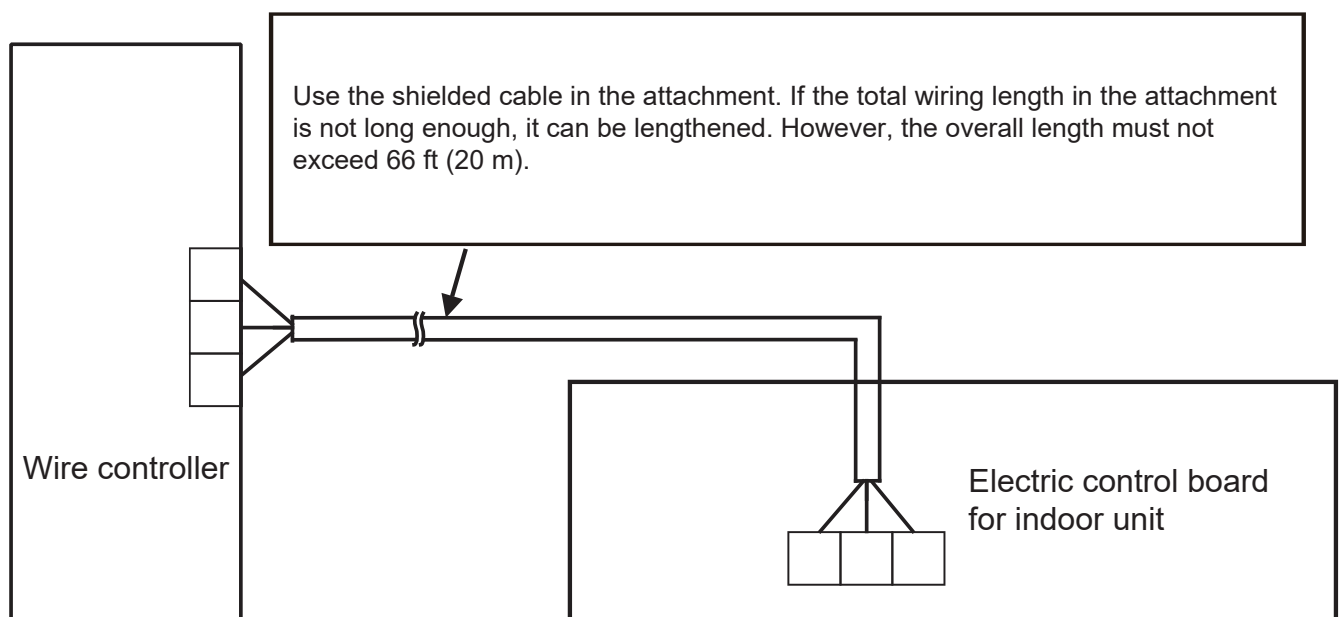
Follow the wire controller installation steps as shown in the figure below:

Installation

3



Connect the wire controller as shown in the figure below:



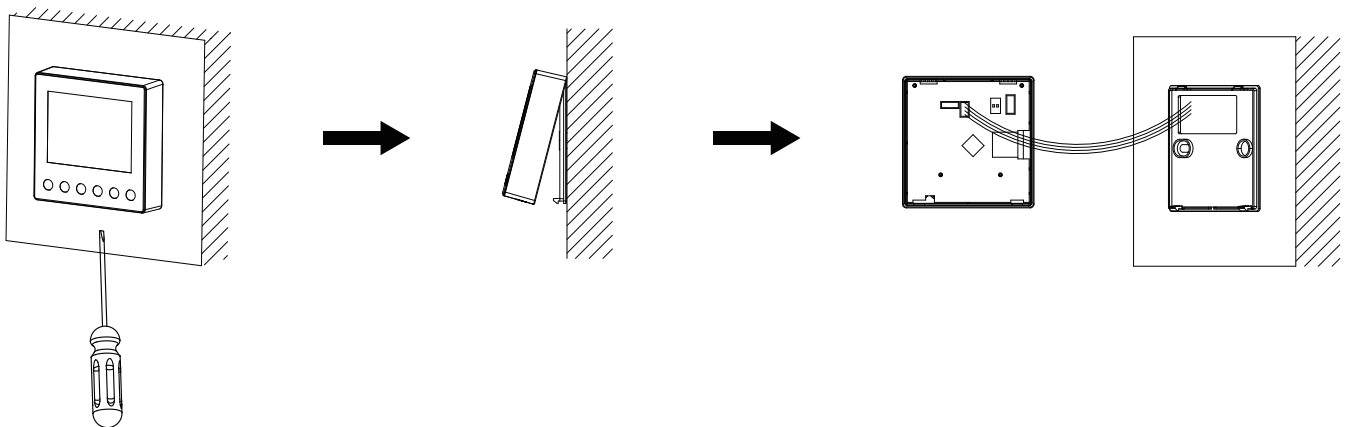
Installation

3

For a brief description of the installation process, follow these steps:

- 1) Feed the signal wires through the rectangular hole in the bottom plate of the wire controller. Then pull the wires out through the wall installation hole. Connect the line and the other end.
- 2) Use M4 x 25 screws to fix the controller base plate on the mounting holes of the wall.
- 3) Assemble the wire controller panel and floor buttons together. The installation is complete. Reserve a certain length of the line at the bottom of the box in order to facilitate maintenance later.

3. Disassemble the Wire Controller



After completing the installation, confirm the unit performs correctly, not abnormally. Deliver the instructions to the customer for them to store.

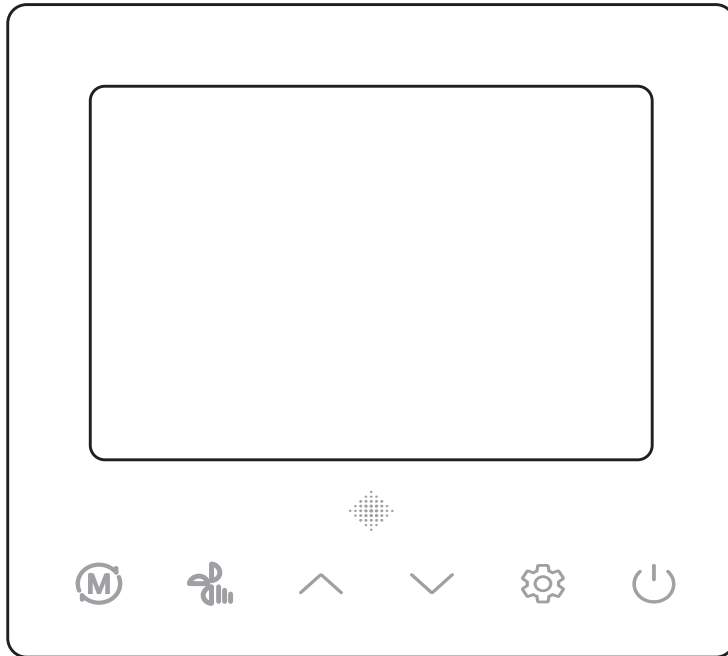


Notes:

- The rear cover may deform if the screw is tightened too much.
- During installation, reserve a certain length for the wire controller's connecting cable in order to facilitate maintenance.

Controller Overview

4



Button Definitions



Mode:

Set the mode of the A/C



Fan Speed:

Set different fan speeds of the A/C



TEMP+ and TEMP-:

Set the temperature of the A/C



Function:

Set the timing for start-up and shutdown, check mode, filter cleaning, child lock, etc.



On/Off:

Start and shut down the A/C

1. Introduction

This is a three-wire communication 12V thermostat with wireless network controlled functions.

2. Description

The 12V thermostat communicates with the system control main board through its main board. The thermostat controls the operating state of the system through its buttons, and displays the working state of the entire system through the LCD. The appearance of the 12V thermostat was shown on the cover page.

3. Functional

The 12V thermostat detects the communication after powering on. If the communication is successful, it displays normally. Otherwise, the "---" icon will flash. The error code "E9" will appear if communication is not successful after 1 min.

Functions of the buttons:

3.1 On/Off

- 1) Control the On/Off state of the system.
- 2) When the 12V thermostat enters the Function, Parameter, or Engineering Settings, press the "On/Off" button to exit the settings and return to the main display interface.

3.2 Mode

Cooling→Dehumidification→Heating→Fan mode



Cycle switching

Dehumidification Mode: The fan switches to low speed (as determined by the AHU setting) and the 12V thermostat displays "Auto". The fan speed can also be adjusted.

Fan Mode: Displays T1 temperature.

3.3 Fan Speed

Adjust the indoor fan speed. Auto: Fan runs automatically; On: High speed.

3.4 Temperature +

Each time the "Temp+" is pressed, the temperature setpoint increases by 1°F/0.5°C. The maximum setpoint is 88°F/32°C (factory default).

If the display is set to "Display indoor room temperature on the main interface", after the adjustment, the setpoint and "⌘" will display first. After 5s, the indoor room temperature will display again and the icon will disappear.

3.5 Temperature -

Each time the "Temp-" button is pressed, the temperature setpoint reduces by 1°F/0.5°C. The minimum setpoint is 57°F/14°C (factory default).

If the display is set to "Display indoor room temperature on the main interface", after the adjustment, the setpoint and "⌘" will display first. After 5s, the indoor room temperature will display again and the icon will disappear.

3.6 Check Mode

1) Press and hold the Function button to enter Check Mode. The lower right corner of the LCD shows the inspection tags, while the corresponding data is shown in the middle of the LCD. Press the "Temp+" and "Temp-" button to select the tags.

2) To exit Check Mode, press the On/Off button, or wait for 10s without operation.

The Check Table for the inverter split unit is shown below:

User Guide

5

Check Table			
No.	Display Content		
		20	AC current (A; Actual value)
00	Unit type: 0 = top discharge; 1 = side discharge; 2 = rooftop unit	21	Compressor current
01	Outdoor power (Model)	22	Oil output (CC; Actual value)
02	Running mode (0: Standby mode; 2: Cooling mode; 3: Heating mode)	23	T1 indoor ambient temperature (°F; Actual value)
03	Target frequency (Hz; Actual value)	24	T2 indoor evaporator temperature (°F; Actual value)
04	Actual frequency (Hz; Actual value)	25	Concentration value
05	Running frequency (Hz; Actual value)	26	Enter PI control sign (0 or 1)
06	T3 condensing temperature (°F; Actual value)	27	Enter defrosting type
07	T4 outdoor ambient temperature (°F; Actual value)	28	Test mode (1-40; Mode gear)
08	T5 exhaust temperature (°F; Actual value)	29	Frequency increase (Shift; Actual value)
09	Temp transform by pressure sensor (°F; Actual value)	30	ΔEV (step; Actual value)
10	IPM modular temp Tipm (°F; Actual value)	31	PFC control state
11	Target temperature Ttrg (°F; Actual value)	32	Frequency limit item
12	Discharge temp superheat (°F; Actual value)	33	Driving failure code subdivision 1
13	Target superheat (°F; Actual value)	34	Driving failure code subdivision 2
14	Fan speed (Actual value / 10)	35	Last failure or protection code
15	EXV opening degree (step; Actual value)	36	Software version number (1-255)
16	Pressure value (PSI; Actual value)	37	T7 condensing temperature (°F; Actual value)
17	Pressure value transform by T3 (PSI; Actual value)	38	T30 temperature (°F; Actual value)
18	AC voltage (VAC; Actual value)	39	Compression ratio
19	DC voltage (VDC; Actual value)		

3.7 Wireless Network Connection

Press "Temp+" and "On/Off" together for 2s to clear the current wireless network information and re-configure the user's Wi-Fi account and password.

Relationship between the Wi-Fi icon flashing and Wi-Fi state.

Wi-Fi Icon	Wi-Fi State	
Slow flash for 3s	Press the Wi-Fi connection button 1 time	3 times flashing within 3s, then off 3s
Fast flash	In Wi-Fi configuration state	2 times flashing with 1s
Double flash	In LAN state (Reserved)	2 times fast flashing within 1s then off 0.5s
Slow flash	Failed connection to the Wi-Fi	1 time flashing within 2s
On	Failed connection to the Wi-Fi and cloud server	
Fast flash 1 time every 5s when it is on	Normal connection to the Wi-Fi and cloud server	

3.8 Function Setting Mode

Under any operating states (except Check Mode), press the "Function" button to enter the Function Setting Mode.

Electric Auxiliary Heat

Press the "Function" button to enter the Function Setting Mode till this icon "🔥" flashes. The "Big double 8 digital tube" indicates the current state (0 - Off factory default; 1 - Auto). Press "Temp+" and/or "Temp-" to adjust the setting parameters.

Filter Cleaning Reminder

Press the "Function" button to enter the Function Setting Mode till the icon "🧼" appears. The "Big double 8 digital tube" indicates the current status. Press "Temp+" and/or "Temp-" to set the filter cleaning reminder function: 0 - Off (factory default); 1 - On (If this icon "🧼" appears, it indicates that the filter must be cleaned).

Child Lock

Press the "Function" button to enter the Function Setting Mode till this icon "🔒" appears. The "Big double 8 digital tube" displays the current status. Press "Temp+" and/or "Temp-" to switch on and off the Child Lock function. When the Child Lock function is activated, only the "Temp+" and "Temp-" buttons are available. Press and hold "Temp+" and "Temp-" to unlock.

Wi-Fi Status

Press the "Function" button to enter the Function Setting Mode till this icon "📶" appears. The "Big double 8 digital tube" indicates the current status: 1 - AP configuration status; 2 - Wi-Fi is configured but not connected to the router; 3 - Wi-Fi is configured and connected to the router; 4 - Connected to the router and cloud; 5 - Wi-Fi device is in Eco Mode.

Note: When the Wi-Fi controller is unavailable or abnormal, "---" displays.

Freeze Sentinel

Press the "Function" button to enter the Function Setting Mode till this icon "❄️" appears. The thermostat will display the current status: 0 - Off (factory default); 1 - On. Press "Temp+" and/or "Temp-" to switch on and off the function. When the Freeze Sentinel is on and the room temperature lower than 47°F, the unit will switch from Standby Mode to Heating Mode without the user's intervention until the room temperature reaches 55°F. This prevents the indoor room temperature from getting too low. When the unit is turned off in Freeze Sentinel and Heating Mode, the function status will be set to off.

Parameter Setting

Press the "Function" button to enter the Function Setting Mode, then press and hold the "Mode" button to enter the parameter setting interface.

In the parameter setting interface, the correct digital tube displays the serial number of the setting item. The middle digital tube displays the numerical value, as shown in the table below. In the parameter setting interface: Press the "Fan Speed" or "Function" button to select the serial number of the setting item. Press "Temp+" and/or "Temp-" button to adjust the parameter value.

Serial Number	Parameter	Parameter Description	Remarks
1	Fahrenheit/Celsius setting	Default °C; °C -> °F -> °C	Displayed as setpoint
2	Maximum setpoint	Default 32°C, with range of 24-32°C Default 88°F, with range of 76-88°F	Display set value
3	Minimum setpoint	Default 14°C, with range of 14-24°C Default 57°F, with range of 57-76°F	Display set value
4	Temperature display in the main interface	0: Setpoint 1: Indoor room temperature	Display 0/1
5	Prompt tone of press button	0: Silent; 1: Voiced (Default)	Display 0/1
6	Filter cleaning reminder time	1000h /2000h/2000h/3000h/3500h /4000h/5000h/6000h (Default 2000h)	Display 10/20/30/35/40/50/60
7	Remote master /slave settings	Default: 0 - host; 1 - slave (optional)	Only available when two 12V thermostats are connected, otherwise this leads to communication error
8	Power off memory	0 - Off 1 - On (Default)	Display 0/1

Note: The slave 12V thermostat cannot enter Parameter Settings and Check Mode.

DIP Switch

6

	On	Off
1	Reserved	Reserved
2	Reserved	Reserved

Error Codes

7

Note: If there is a conflict between a wire controller fault and an internal unit fault, the internal unit fault takes priority.

Code	Failure and Protection
E1	Communication error (indoor unit)
E2	T1 sensor error
E3	T2 sensor error
E4	R454b sensor error
E6	Refrigerant leakage error
E7	EEPROM failure (indoor unit)
E8	Fan motor error (indoor unit)
E9	Communication fault of the wire control
F0	Communication failure (outdoor unit)
F4	T4 outdoor ambient temperature sensor error
F5	T5 exhaust temperature sensor error
F6	T3 condensing temperature sensor error
F7	T7 temperature sensor error
F8	T7 temperature sensor error in detecting condensate risks
F9	AC overvoltage/undervoltage protection
FA	EEPROM failure (outdoor unit)
FB	EEPROM failure of the driver chip
FC	IPM modular sensor error
FD	HLP pressure sensor failure
FE	T3 or T5 sensor disconnect error
FF	HPS condenser sensor disconnected
P1	High pressure switch error
P2	Low pressure protection
P3	Inverter overcurrent protection
P4	T5 exhaust temp sensor high temperature protection
P5	T3 condenser sensor high temperature protection (Cooling Mode)
P6	IPM protection

Error Codes

7

Code	Failure and Protection
P7	T2 freeze protection
P8	IPM high temperature protection (Tf)
P9	DC fan motor error
PC	Wet operation error
PD	High pressure abnormal error (Heating Mode)
H0	Communication fault of the master board and driver chip
H1	T3 sensor high temperature error (Cooling Mode) (3 times P5 error within 180 min)
H2	High pressure switch error (3 times P1 error within 150 min)
H3	High pressure abnormal in Heating Mode (3 times PD error within 180 min)
H4	IPM modular high temperature error (3 times P8 within 120 min)
H5	Low pressure error (5 times P2 within 240 min)
H6	Discharge temperature abnormal error (3 times P4 within 100 min)
H7	Wet operation error (3 times PC within 200 min)
H8	T3 condenser sensor disconnect error (3 times FE within 120 min)
HC	Discharge temperature sensor disconnect error (3 times FE within 180 min)
HE	Condensate error (3 times F8 within 60 min)
L0	DC cable bus low voltage protection
L1	DC cable bus high voltage protection
LA	Frequency limitation by voltage
LB	Frequency limitation or decline by high pressure
LC	Frequency limitation by condenser temperature
LD	Frequency limitation by discharge temperature
LE	Frequency limitation by IPM modular high temperature
LF	Frequency limitation by current
d0	Oil return
df	Defrost
dC	Force cooling
ATL	Overtemperature protection
PRH	Crankcase heater preheating (Can not start)

Download App

8

The 12V thermostat can connect to wireless networks and recognize remote controls.

Note: This is only applicable with the Wi-Fi 12V thermostat.

For Android Smart Phones

Method 1: Scan the QR code with a browser scanner, then download and install the app.

Method 2: Open the Google "Play Store" on your smart phone and search "Pioneer Airlink", then download and install the app.



For iOS Smart Phones

Method 1: Scan the QR code and follow the tips to get into "AppStore", then download and install the app.

Method 2: Open the Apple "AppStore" on your smart phone and search "Pioneer Airlink", then download and install the app.



Note: Enable the Storage/ Location/Camera permissions for this app when installing. Otherwise it will have some problems when operating.

Activate App

9

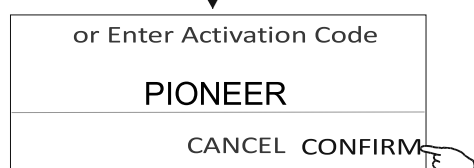
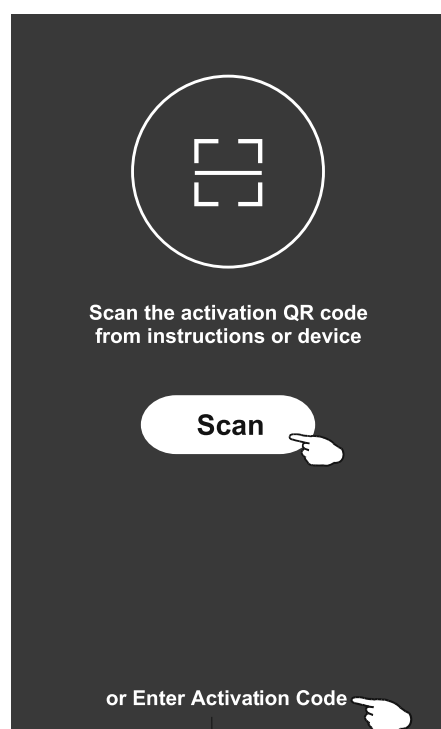
The first time you use the app, you will need to activate it.

1. Launch the "Pioneer Airlink" app on your smart phone.
2. Method 1: Tap the "Scan" button and scan the correct Activate QR code.



Pioneer Airlink

Method 2: Tap "or Enter Activation Code" in the bottom of the screen. Then enter the activate code and tap "Confirm".



Activate QR code and activation code



For Cassette Series



For Ceiling & Floor Series



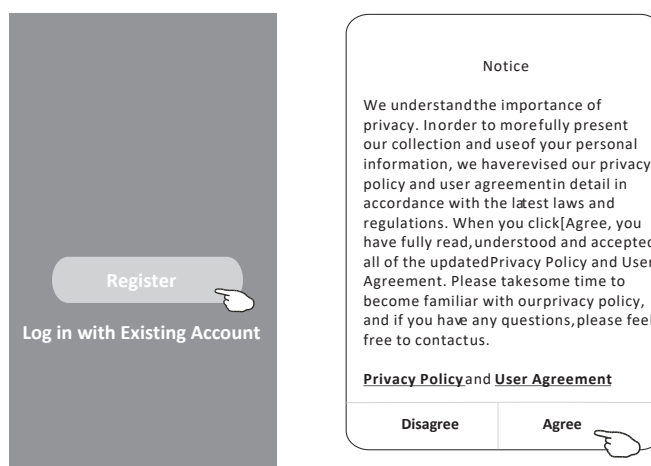
For Duct Series

Note: Without the QR code or activation code, you can't activate the app or use it. Keep the codes safe.

Register App

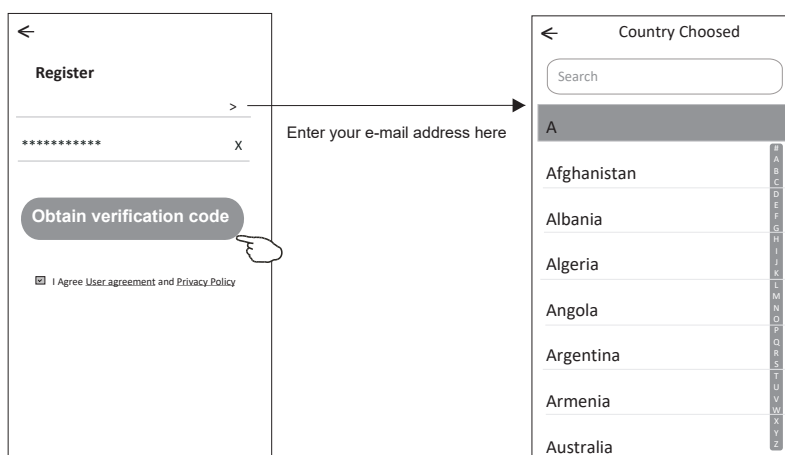
10

1. If you don't have an account, tap the "Register" button.
2. Read the Privacy Policy and tap "Agree".



3. Tap ">" and choose the country.
4. Enter your e-mail address.
5. Tap the "Obtain verification code" button.

Use the search bar or slide the screen up/down to find and choose the country.



Register App

10

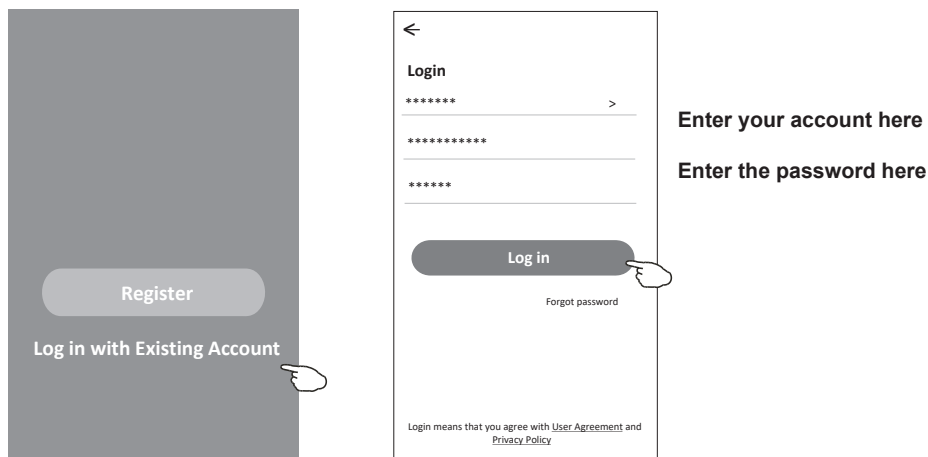
6. Enter the verification code you received from your e-mail.
7. Set your password. The password must be 6-20 characters including letters and numbers.
8. Tap "Done".

The image shows two mobile app screens side-by-side. The left screen is titled 'Enter verification code' and features a four-digit input field with asterisks. Below the input field, it says 'Verification code is sent to your email: *****@****,Resend(55s)'. A hand icon points to the input field. The right screen is titled 'Set Password' and features a password input field with asterisks and a toggle icon. Below the input field, it says '6-20 characters for password, including character, numbers'. At the bottom of the screen is a 'Done' button. A hand icon points to the 'Done' button.

Log into App

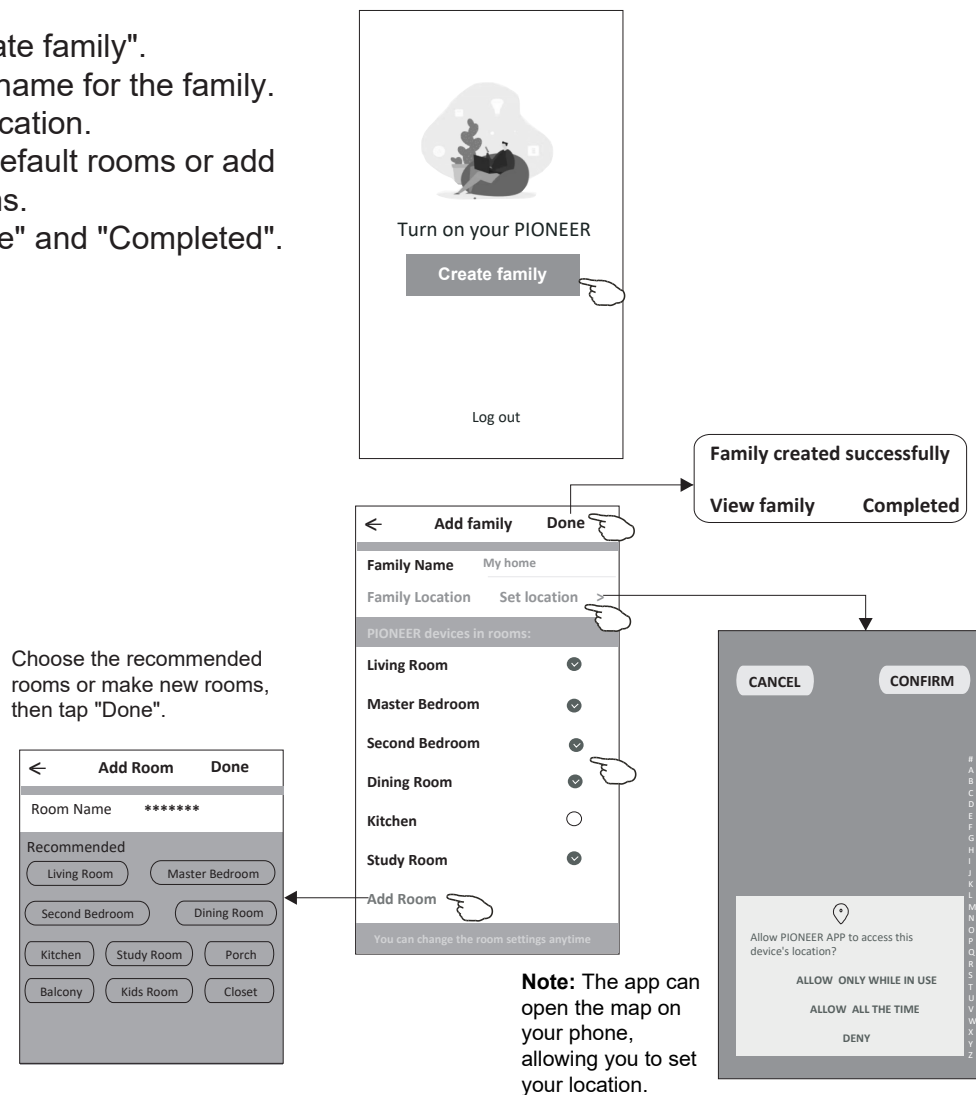
11

1. Tap "Log in with Existing Account".
2. Enter your registered account and password.
3. Tap the "Log in" button.



If using the app for the first time, you need to create a Family on the app.

4. Tap "Create family".
5. Create a name for the family.
6. Set the location.
7. Choose default rooms or add new rooms.
8. Tap "Done" and "Completed".

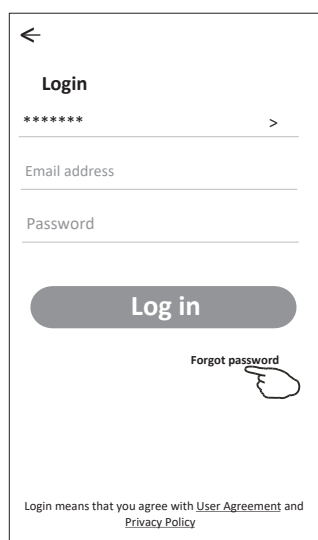


Forgot Password

12

If you forgot the password or you want to reset the password, follow these steps:

1. Tap "Forgot password".
2. Enter your account (e-mail address) and tap the "Obtain verification code" button.
3. Enter the verification code received by your e-mail.
4. Set the new password and tap "Done".



←

Login

***** >

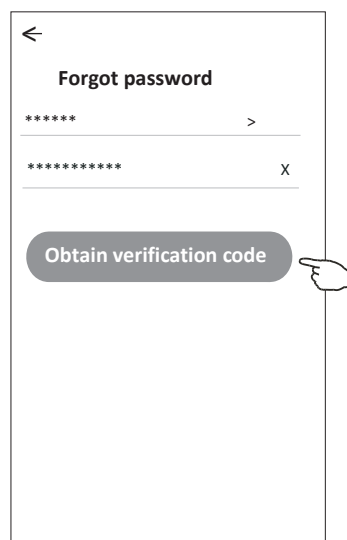
Email address

Password

Log in

[Forgot password](#)

Login means that you agree with [User Agreement](#) and [Privacy Policy](#)



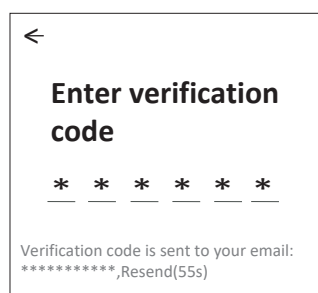
←

Forgot password

***** >

***** X

Obtain verification code

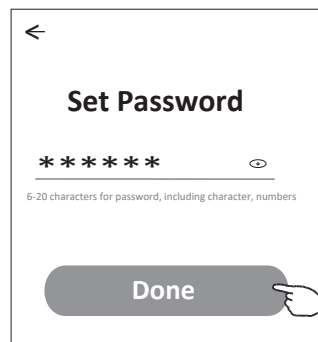


←

Enter verification code

* * * * *

Verification code is sent to your email:
***** ,Resend(55s)



←

Set Password

6-20 characters for password, including character, numbers

Done

Adding Devices

13

Operation for Wi-Fi Configuration and Adding Devices

1) Wi-Fi Configuration

Method 1: Press the "Temp+" and "On/Off" buttons together for 2s.

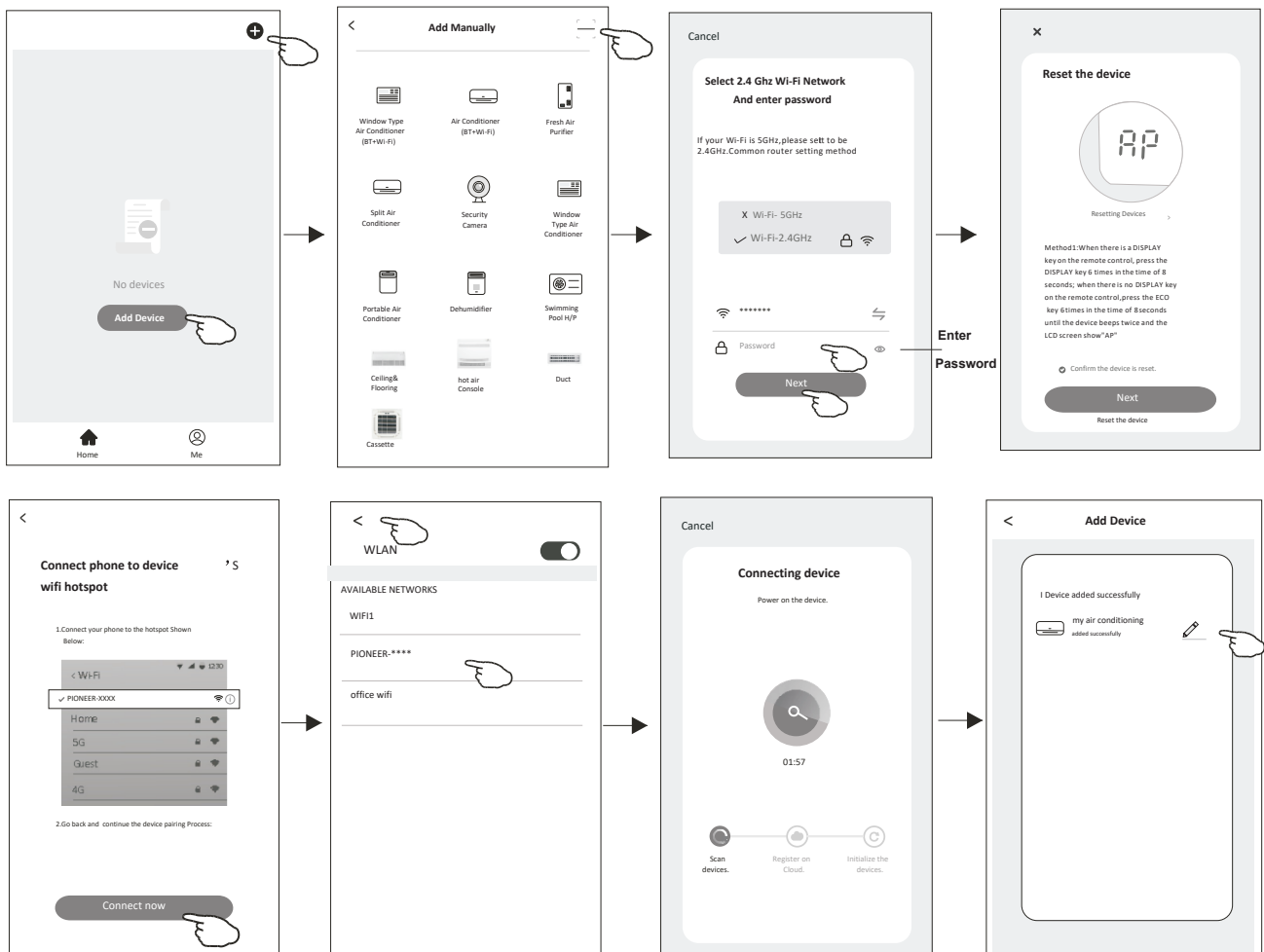
Method 2: Press the "Function" button to enter the Function Setting Mode till the Wi-Fi icon appears, then press "On/Off".

After, the Wi-Fi icon slowly flashes 3 times, then flashes quickly once.

2) Open the Wi-Fi app, click the "Add Device" button > "Add Manually" > "Air Conditioner" as shown in the following photos:

3) Enter the name and password of the wireless network.

4) Select the SmartConfig Mode to start the network distribution, and the device can be added after the network distribution is completed.

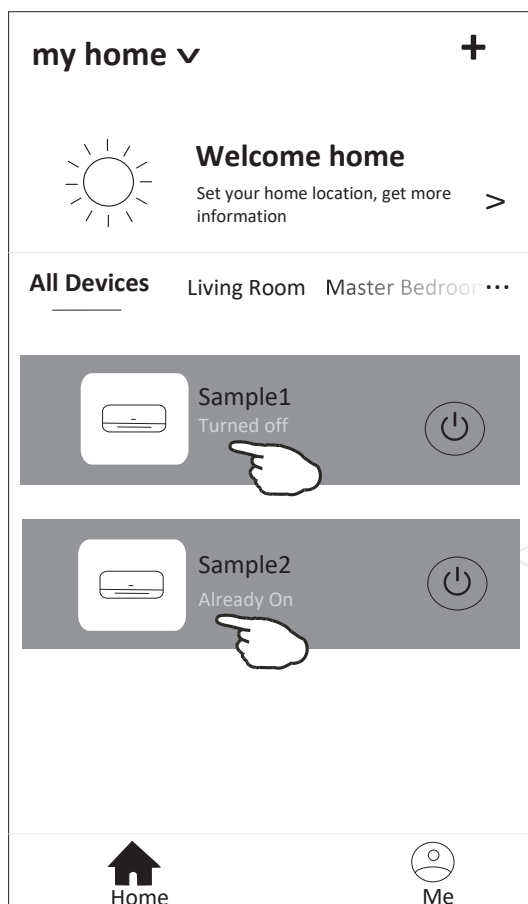


Adding Devices

13

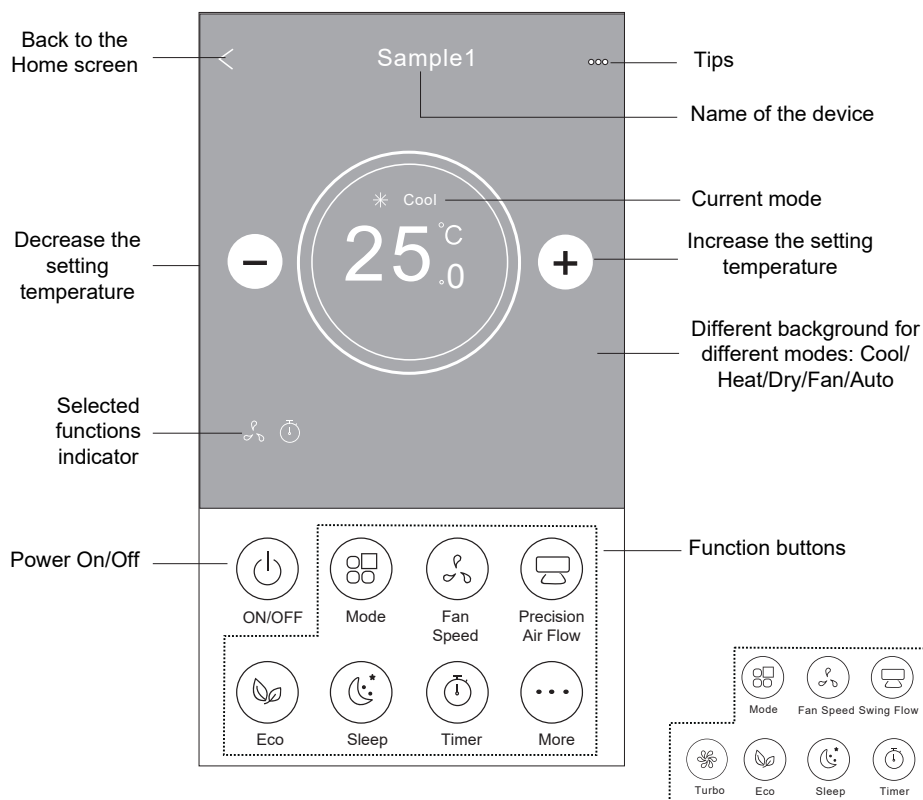
The Device Control screen will pop up automatically after adding the device.

The Device Control screen will pop up manually by tapping the device's name on the Home screen.



Main Control Interface

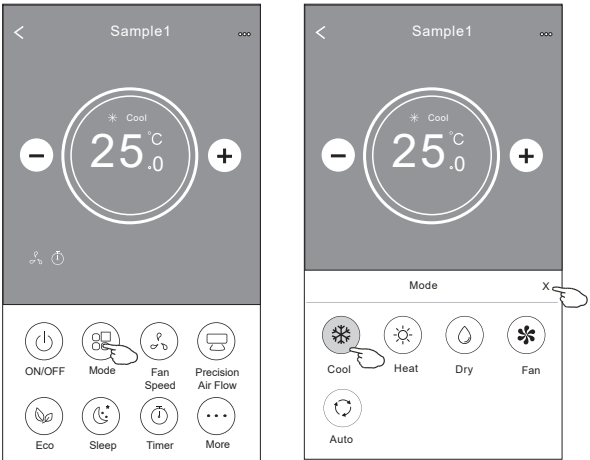
14



Note: Function buttons may appear slightly different, depending on the air conditioner model. Examples are above:

Mode Setting

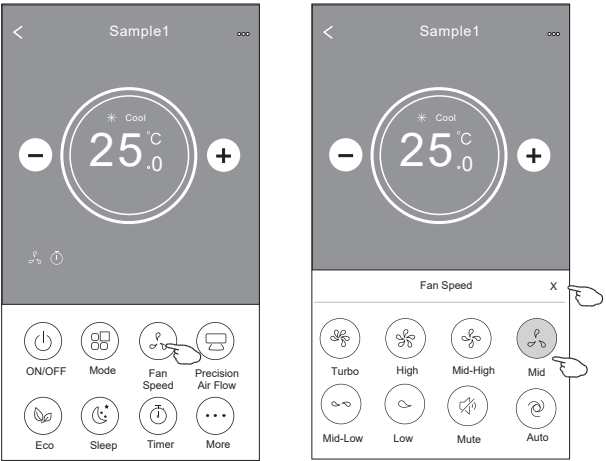
1. Tap the "Mode" button.
2. Select your desired working mode by tapping one of the options. There are 5 options available on the Mode screen.
3. Tap the "X" button to return to the Main Control screen.
4. The mode and background will change on the screen.



Note: Read the details of each mode in the user manual to achieve more comfort.

Fan Speed Selection

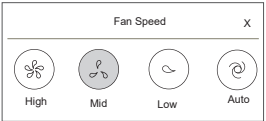
1. Tap the "Fan Speed" button.
2. Choose your desired fan speed by tapping one of the options.
3. Tap the "X" button to return to the Main Control screen.
4. The selected fan speed indicator will appear on the screen.



Mode	Fan Speed
Cool	All speeds
Fan	All speeds
Dry	
Heat	All speeds
Auto	All speeds

Note: The fan speed can't be adjusted in Dry mode.

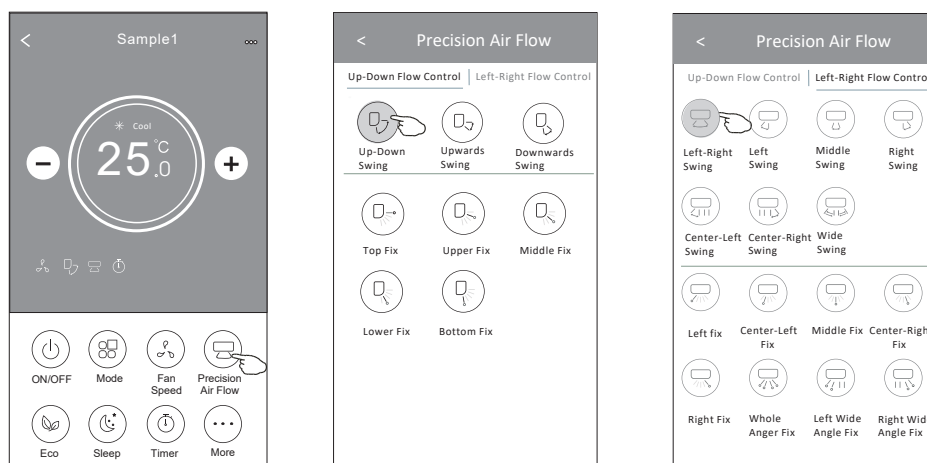
Note: The Fan Speed screen may appear slightly different, depending on the air conditioner model. Example as below:



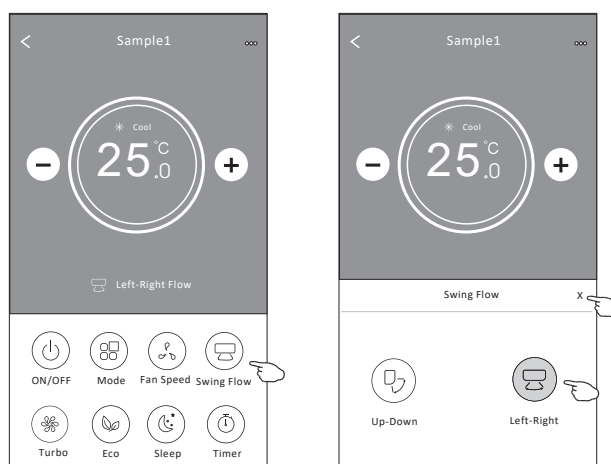
Air Flow Control

1. Tap the "Precision Air Flow" or "Swing Flow" button.
2. Choose your desired air flow by tapping one of the options.
3. Tap the "X" button to return to the Main Control screen.
4. The Selected Air Flow indicator will appear on the screen.

Note: If you activate the Precision Air Flow function with a model without auto left-right wind, you will hear a beep, but no actions will occur.



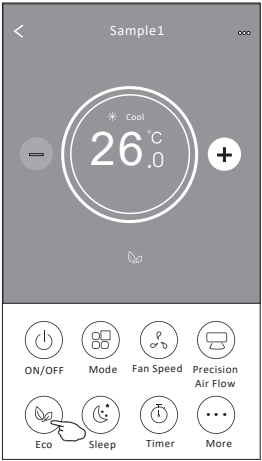
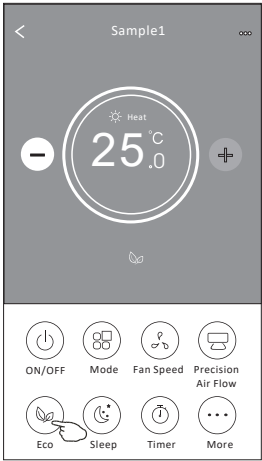
Note: The Main Control and Air Flow screens may appear slightly different, depending on the air conditioner model. Example as below:



Eco Function

1. Tap the "Eco" button to activate the function. The button will light up and the indicator will appear on the screen.
2. Tap the "Eco" button again to disable the function.
3. Temperature controlled for some air conditioner model:

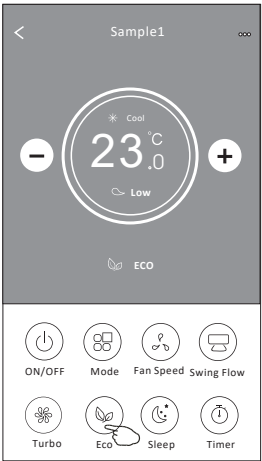
In Cooling mode, the new setting temperature will $\geq 79^{\circ}\text{F}(26.1^{\circ}\text{C})$
In Heating mode, the new setting temperature will $\leq 77^{\circ}\text{F}(25^{\circ}\text{C})$



Mode	Eco Enabled
Cool	Yes
Fan	
Dry	
Heat	Yes
Auto	

Eco is disabled in Fan/Dry/Auto mode.

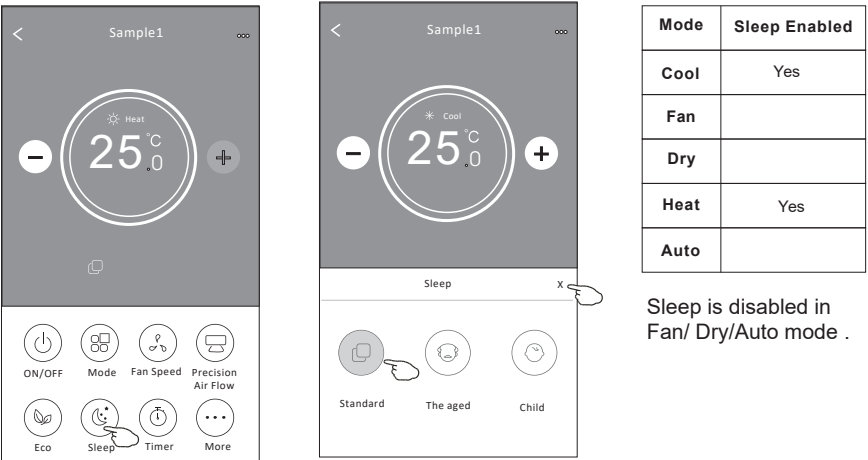
Note: The Main Control screen and Eco control method may appear slightly different, depending on the air conditioner model. Examples are below:



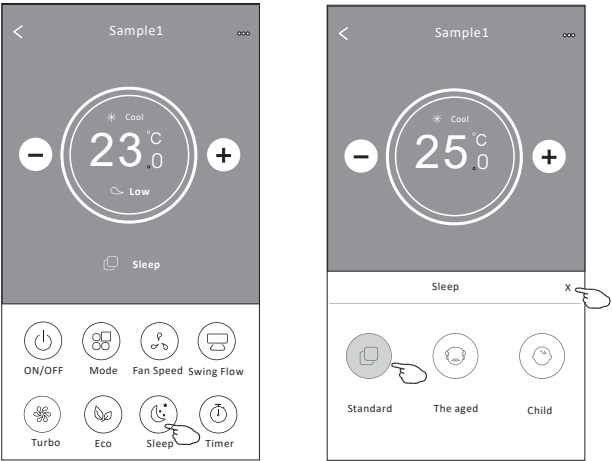
Note: Eco is disabled in Turbo/Sleep mode too for some air conditioner models.

Sleep Function

1. Tap the "Sleep" button.
2. Choose your desired sleep mode by tapping one of the options.
3. Tap the "X" button to return to the Main Control screen.
4. The Selected Sleep Mode indicator will appear on the screen.



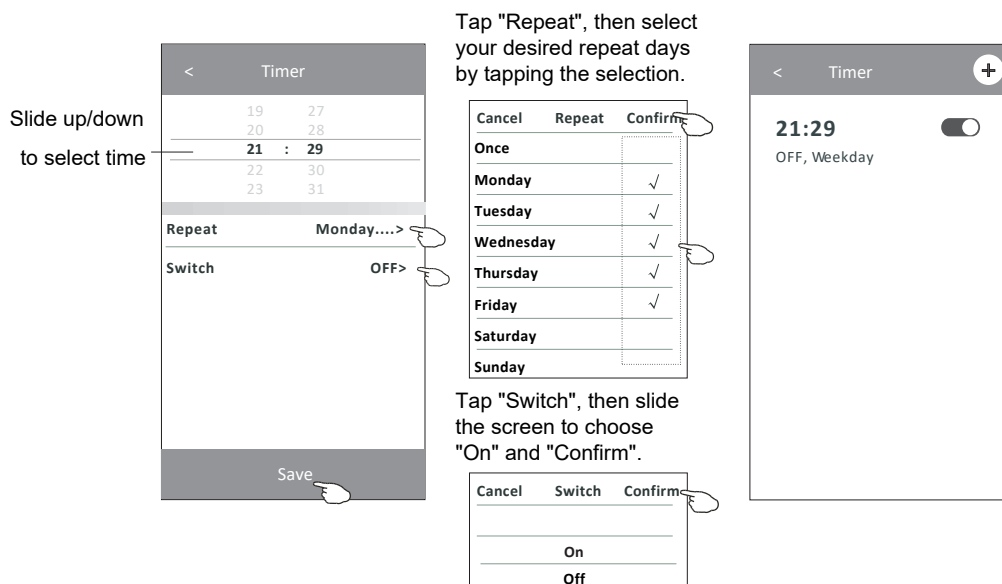
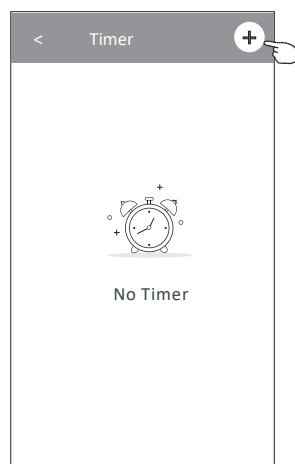
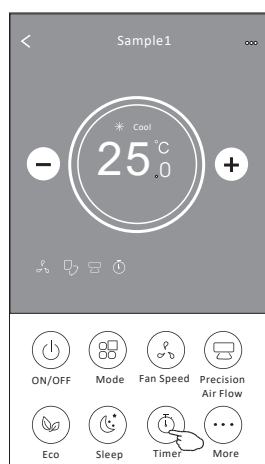
Note: The Main Control screen may appear slightly different, depending on the air conditioner model. Example as below:



Note: Sleep is disabled in Turbo mode for some air conditioner models.

Timer (On) Setting

1. Tap the "Timer" button.
2. Tap "+" in the upper right corner of the Timer main screen.
3. Choose your desired Time/Repeat/Switch Off options, then tap "Save".
4. The timer (off) will appear on the Timer main screen.



Timer (Off) Setting

1. Tap the "Timer" button.
2. Tap "+" in the upper right corner of the Timer main screen.
3. Choose your desired Time/Repeat Date/Switch(On)/Temperature/Mode/Fan Speed/Air Flow options, then tap "Save".
4. The timer will appear on the Timer main screen.

Slide up/down to select time

Tap "Repeat", then select your desired repeat days by tapping the selection.

Tap "Switch", then slide the screen to choose "On" and "Confirm".

Tap Temperature/Mode/Fan Speed/Air Flow one by one, then choose your desired options by tapping the selections. Tap "Confirm" to save the selections.

Timer Management

1. Change the Time Setting:

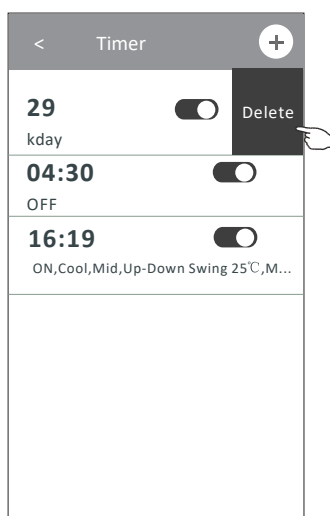
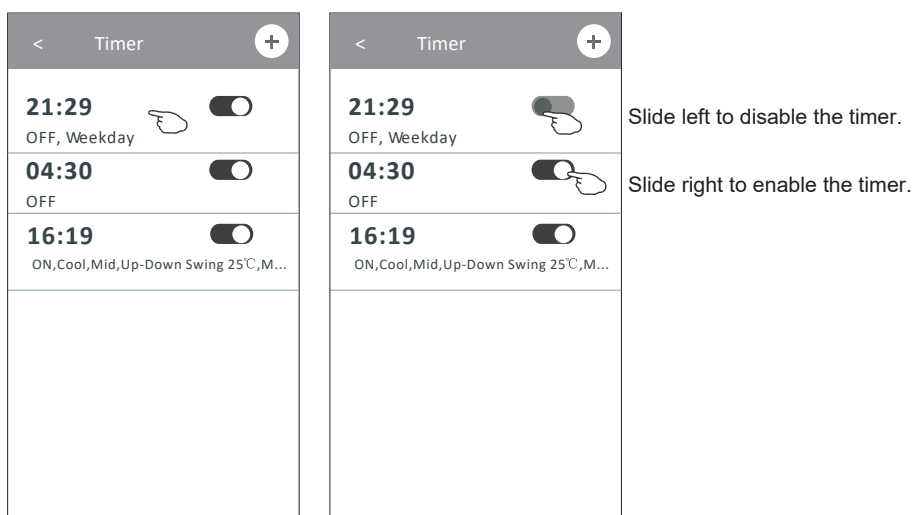
Tap anywhere on the timer list bar except the switch bar to reach the Time Setting screen. Change the settings, then tap "Save".

2. Enable or Disable the Timer:

Tap the right of the switch to enable the timer. Tap the left of the switch to disable the timer.

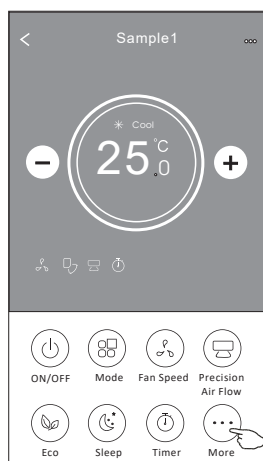
3. Delete the Timer:

Slide the timer list bar from right to left until the "Delete" button appears, then tap "Delete".

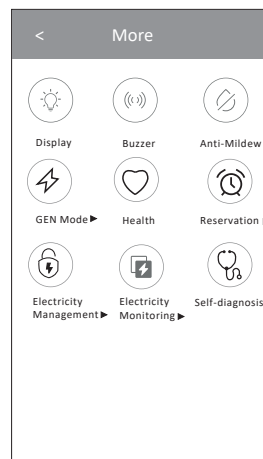


More Functions

1. Tap the "More" button to operate additional functions.



Note: Some air conditioner models don't have the "More" button.



Note: The appearance may be different. Some icons won't appear if the air conditioner model does not have the function.

2. Tap the "Display" button to switch On or Off the indoor LED display.



3. Tap the "Buzzer" button to switch On or Off the buzzing.



4. Tap the "Anti-Mildew" button to activate the Anti-Mildew function.



After turning Off the A/C, it will start to dry, reducing residual moisture and preventing mold. After the function finishes, it will automatically turn Off.

5. Tap the "Buzzer" button to switch On/Off the healthy function.

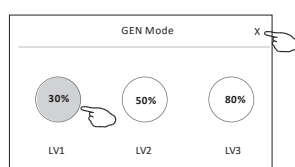


This activates the antibacterial ioniser function. This function is only for models with the ioniser generator.

6. Tap the "GEN Mode" button.

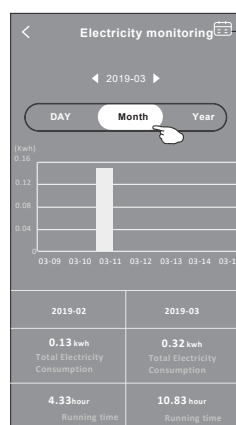
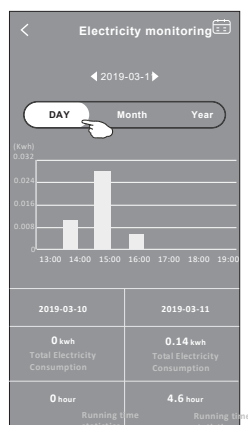


In this mode, you can choose one of the three levels of current. The air conditioner will maintain proper current to save energy.



7. Tap the "Electricity Monitoring" button.

In this function, you can monitor the air conditioner's electricity consumption.



Tap this button to open the calendar, then select the date.

8. Tap the "Self-Cleaning" button.



Check the details of the Self-Cleaning function in the user manual.

9. Tap the "46°F Heat" button.



This function helps keep the room temperature over 46°F(7.8°C)

Check the details of the 46°F Heat function in the user manual.

10. Tap the "Reservation" button.

Choose your desired Time/Repeat date/Temperature/Mode/Fan speed/Air flow options, then tap "Save" to activate the function.

The air conditioner will automatically reach your settings at the appointment time.



Reservation

14	17
15	18
16	19
17	20
18	21

Repeat setting Monday... >

Temperature 25°C >

Mode Cool >

Fan Speed Mid >

Precision Air Flow Up-Down Swing >

Save

Reservation

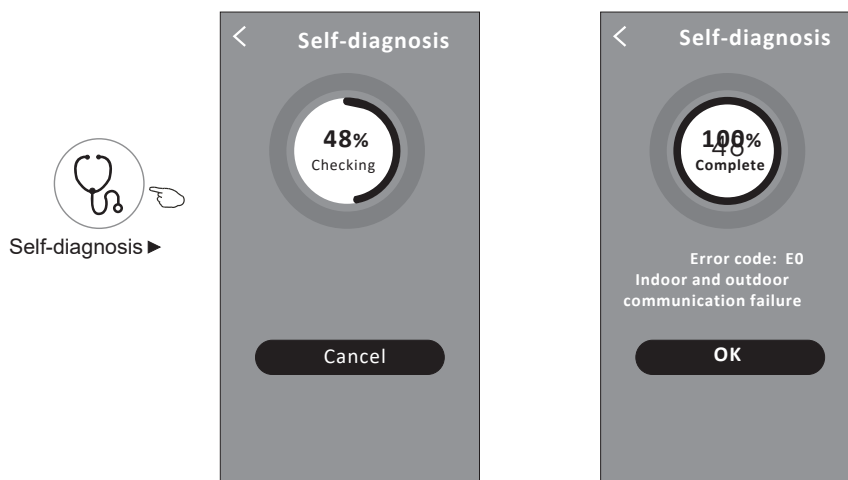
16:19:00

ON, Cool, Mid, Up-Down Swing 25°C, M...

After the reservation is set up, the air conditioner will automatically reach your set requirement at your appointment time.

11. Tap the "Self-diagnosis" button.

The air conditioner will automatically diagnosis itself, then indicate the error code and the problem instructions, if possible.



12. Tap the "☀️" button.

Photosensitive

This function allows the air conditioner to automatically turn On/Off the display, according to the light intensity.

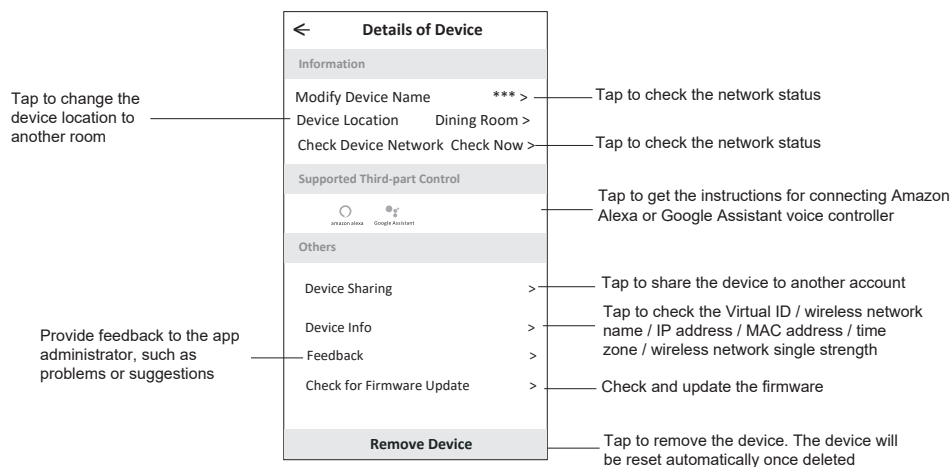
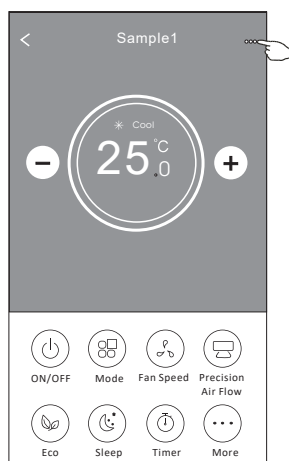
13. Tap the "🌀" button.

Soft Wind

In this function, the air conditioner will blow soft airflow through the micro holes on the deflector.

Device Details/Management 16

Tap the pencil icon in control form 1 or tap "... " in control form 2 to reach the Device Details screen. Here you can get some useful information, such as sharing the device to other accounts. Check the following pictures and instructions carefully.

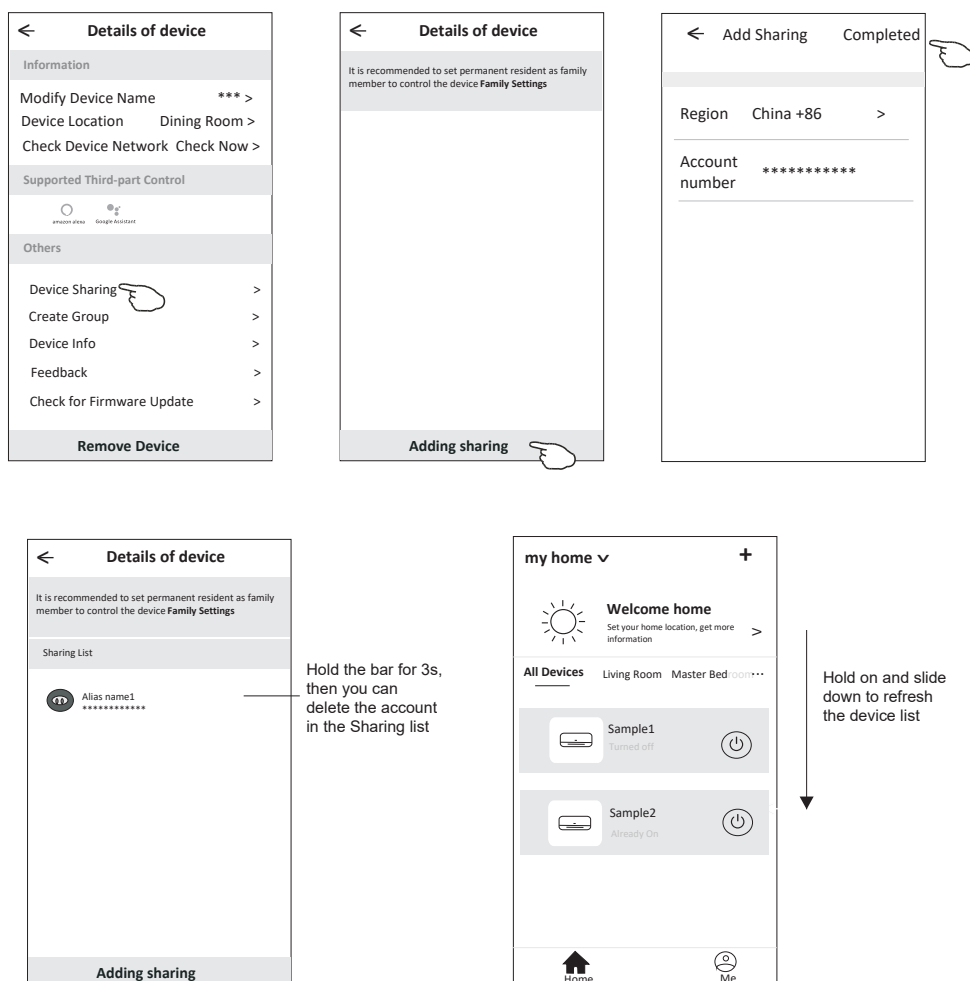


Share Device

17

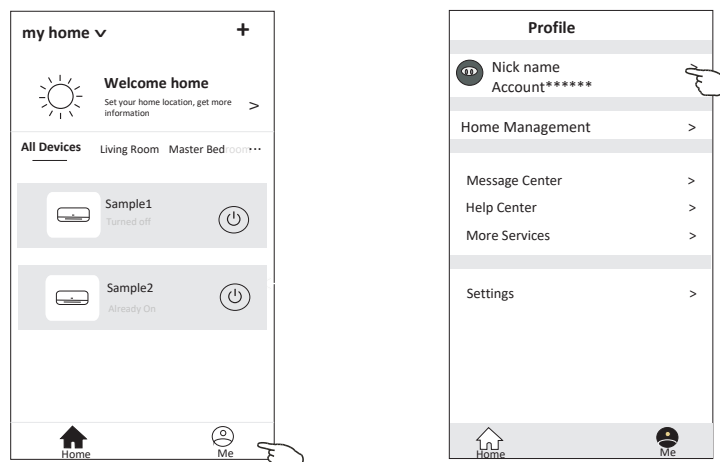
How to share the devices to other accounts? Follow these steps:

1. Tap "Device Sharing" to open the Device Sharing screen.
2. Tap "Add Sharing".
3. Select the region, then enter the desired account you want to share the device with.
4. Tap "Completed" and the account will appear on your sharing list.
5. The individuals you shared the device with should press the Home button and slide down to refresh the device list. After refreshing the device list, the new device will appear.



Account Profile Settings

18



Change the nickname of your account

Edit name

Account one |

Cancel Save

Profile

Profile Picture >

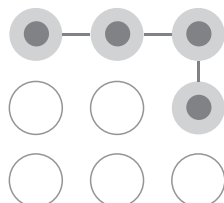
Nickname ***** >

Account Security >

Time Zone Universal >

Select a picture for the account from your phone's local album

Select the time zone



Set a pattern password for launching the app

Account Security

Phone Number *****

Location China

Change Login Password >

Pattern Unlock >

Change Pattern Password >

Deactivate Account >

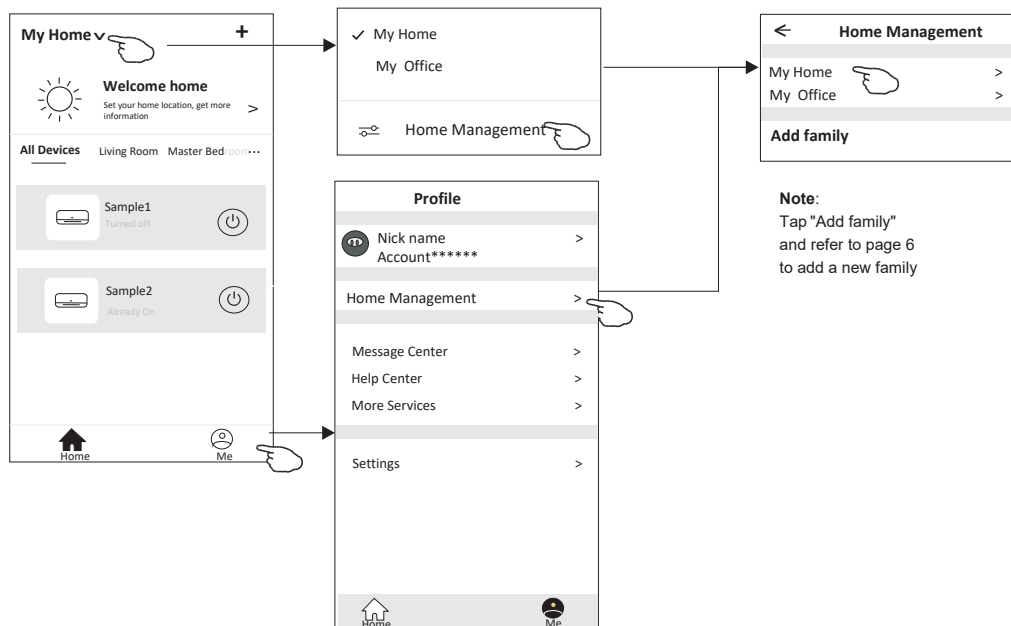
Change the password like resetting the password on page

Tap the switch to enable or disable the pattern password

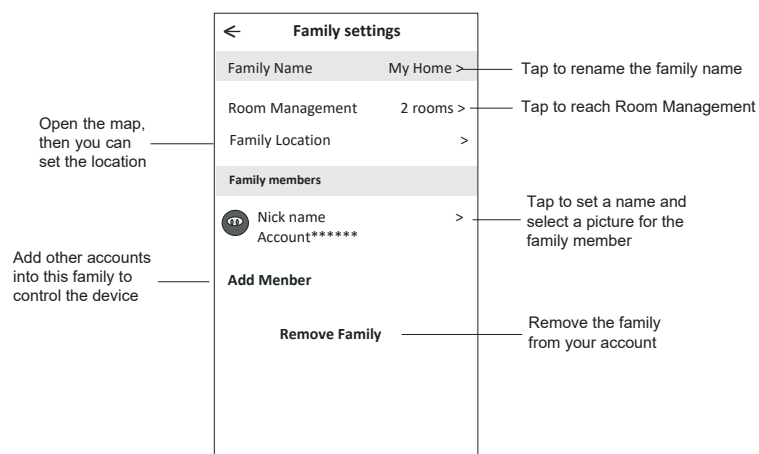
Deactivating the account will cause all data to be deleted

Home (Family) Management 19

1. Tap the home's name at the left upper corner of the Home screen and tap "Home Management". Or tap "Me", then tap "Home Management".
2. Tap one of the families in the family list to reach the Family Settings screen.



3. Set the family as the following indicators.



The design and specifications of this product are subject to change without prior notice as development continues. Consult with the sales agency or manufacturer for details. Refer to the equipment nameplate for all other applicable specifications.

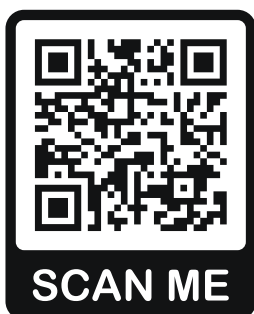


is a registered trademark of Parker Davis HVAC International, LLC.

Parker Davis HVAC International
7290 NW 77 Court, Miami, FL 33166 - USA
Tel : (305) 513-4488
Fax : (305) 513-4499
E-mail : info@pdhvac.com
Website: www.pdhvac.com

Pioneer product line, parts, and supplies are
available online for convenient ordering at:
www.highseer.com
www.pioneerminisplit.com

Scan the below code to visit our support page
where you can find more installation materials:



Copyright © Parker Davis HVAC International, LLC. All rights reserved.
