

Job Name:	
Submitted By:	



Submittal Sheet For:	RT009GLSILCFHG / YN009GLSI24RPG
----------------------	--

Date _____

Ref. _____

Ceiling-Concealed Ducted Inverter Heat Pump

System Full Set Model: **RYT009GLSI24RL**

AHRI Reference Number: **217048762**

Cooling Mode Performance

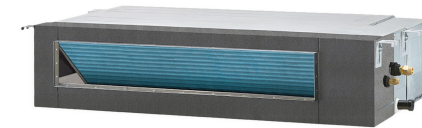
Rated Cooling	9,500 BTU/hr
Ambient Range	5°F ~ 131°F
SEER Rating	20.5 BTU/W·h
EER Rating	12.5 BTU/W·h

* 100% Capacity @ Indoor DB 80°F/WB 67°F

Heating Mode Performance

Rated Heating	9,500 BTU/hr
Ambient Range	-13°F ~ 86°F
HSPF2 IV (V)	9.5 (8.5) BTU/W·h
COP	3.5 (W/W)

*High Heat (47°F) = 9,500 BTU / Low Heat (17°F) = 6,000 BTU / COP (5°F) = 1.9



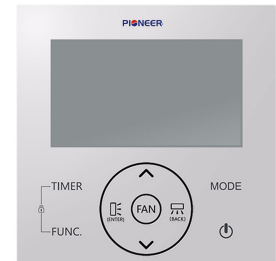
Ceiling-Concealed Ducted Indoor Unit



Outdoor Condensing Unit



Installation Kit (Pipe + Cable)



Handheld Remote Controller

Electrical Information

Rated Input (W)	Cooling	Heating
	750	800
Rated Current (A)	3.2	3.5
Breaker Needed	15A (Double-Pole)	
Power Supply	208~230V, 1Ph, 60Hz	

Piping and Refrigerant

Liquid Line (OD)	1/4"
Suction Line (OD)	3/8"
Refrigerant Precharge	R454b (Selectable Lineset)
Max Length/Height Diff.	50 ft. / 33 ft.

This combination is
Energy-Star certified.



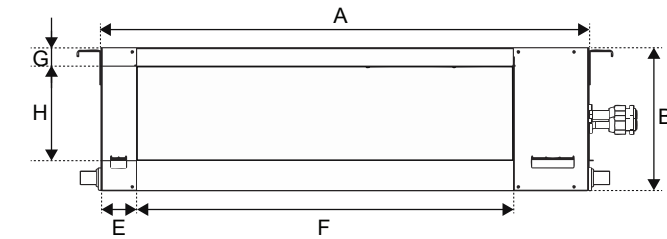
Interior Unit (Air Handler) Specifications

Type	Heat Pump
Sound Level (dBA)	43 (Hi) / 41 (Med) / 39 (Lo)
Auto Air Circulation	2-Way Louver (Up-Down + Left-Right)
Dimensions (WDH)	27"-1/2 x 19"-1/4 x 7"-7/8
Weight (lbs)	33.1

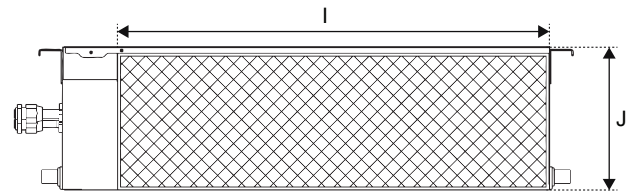
Exterior Unit (Condenser) Specifications

Sound Level (dBA)	50
Recommended Room Size	250~350 Sq. ft.
Minimum Room Size	28 Sq. ft.
Compressor	Inverter-Driven Rotary
Dimensions (WDH)	31"-7/8 x 12" x 21"-5/8
Weight (lbs)	52.7

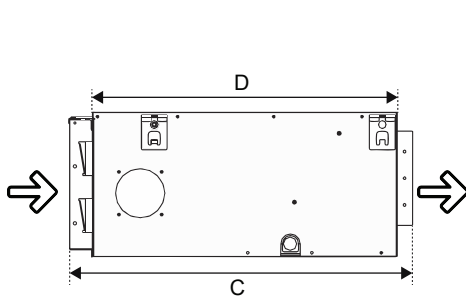
RT009GLSILCFHG Air Handler Dimensional Data



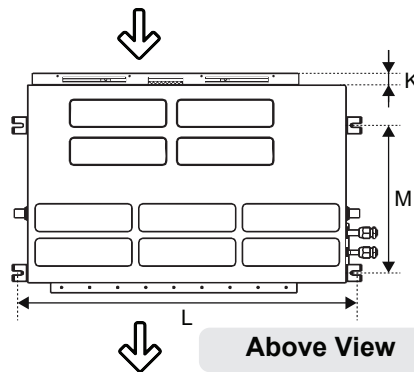
Supply Side



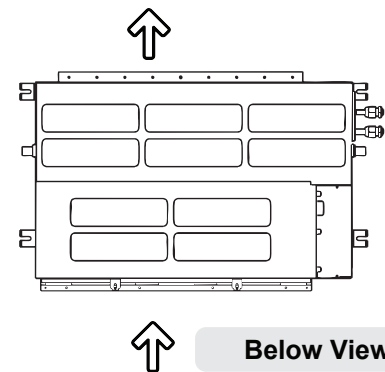
Inlet Side



Side View

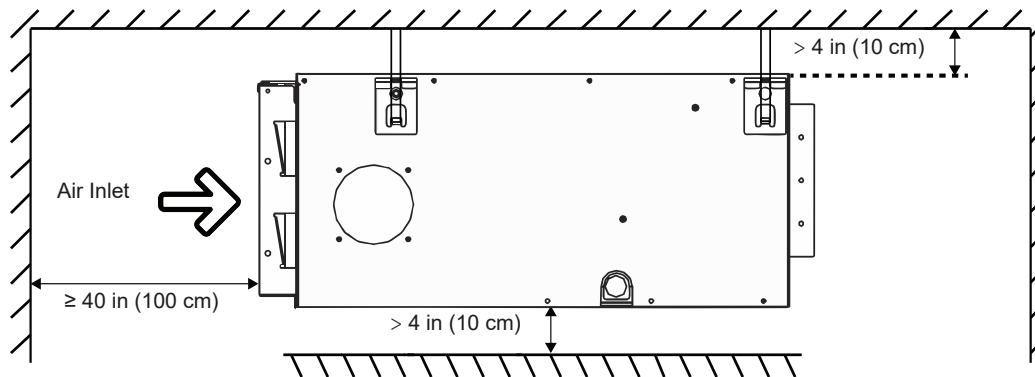


Above View

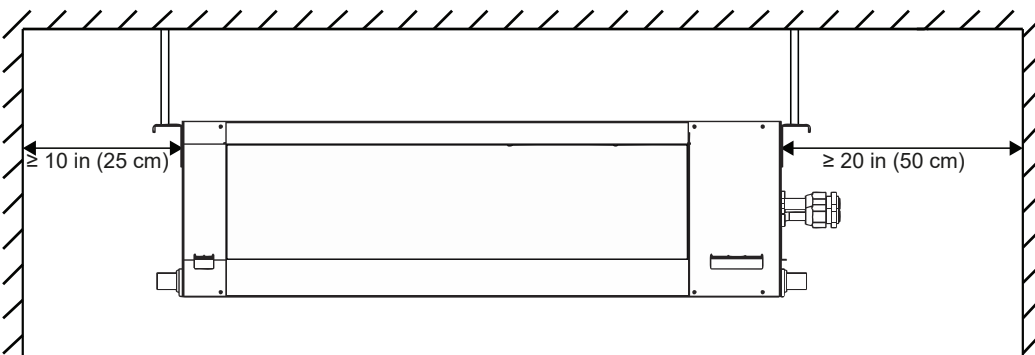


Below View

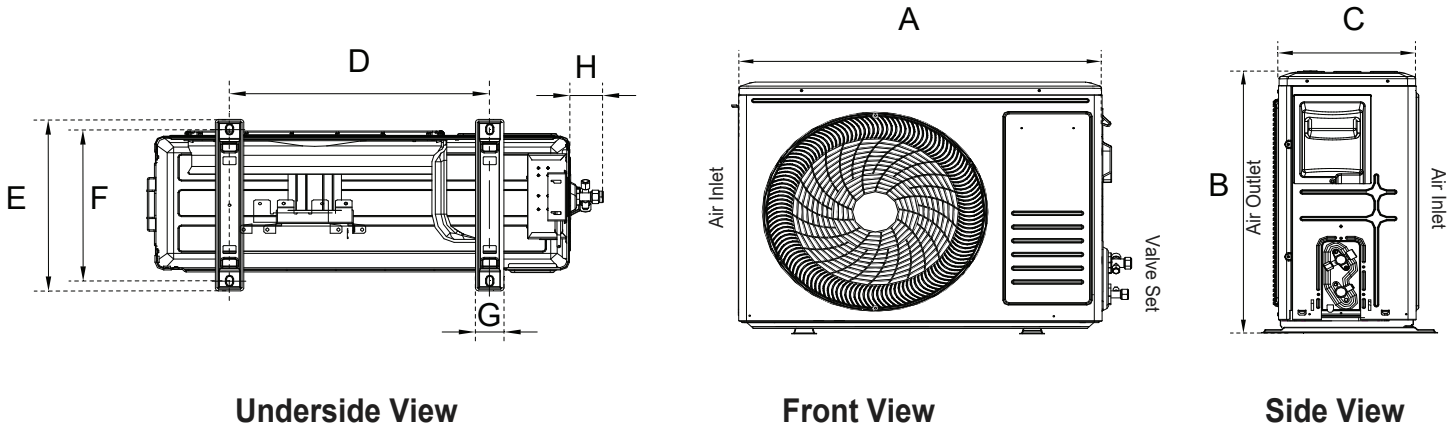
Overall Air Handler Dimensions				Front Side Air Outlet (Supply)				Rear Side Air Inlet (Return)			Mounting Brackets	
A	B	C	D	E	F	G	H	I	J	K	L	M
27-5/8 in	7-7/8 in	19-3/8 in	17-3/4 in	1-3/4 in	20-1/8 in	1/8 in	5-1/2 in	23-5/8 in	7-3/8 in	1-3/8 in	29-1/8 in	11-3/4 in
701.7 mm	200 mm	492.1 mm	450.9 mm	44.5 mm	511.2 mm	3.2 mm	139.7 mm	600.1 mm	187.3 mm	34.9 mm	739.8 mm	298.5 mm



Side View



Front View



Model	A	B	C	D	E	F	G	H
YN009GLSI24RPG	741 mm	551 mm	253 mm	434 mm	305 mm	285 mm	48 mm	58 mm
	29-1/8"	21-3/4"	10"	17-1/8"	12"	11-1/4"	1-7/8"	2-1/4"

Warranty Information and Length



Complete warranty details are available with the vendor or online at <https://www.pdhvac.com/support/warranty/>. This high-quality system is eligible for up to a 5-year limited warranty on the compressor, and 5 years on other internal parts. To qualify for this warranty, the system must be installed within 90 days and registered properly. All other installations that are unregistered qualify for only 1-year parts/compressor warranty.

Outstanding Features

- LED Display
- Energy Saving
- Ultra-Thin Design
- Dual Drain Options
- Customizable Timer
- Eco-Friendly Refrigerant
- Whisper-Quiet Operation
- Power Loss Memory Recovery

Available Accessories

Part Number	Description
IKT-LCVR4P-KIT	<i>Decorative PVC Line Cover Kit</i>
IKT-LNBR-1/4-3/8	<i>BendAid Flexible Easy Bender Kit</i>
BRK-FRM-C-2P	<i>Folding Mounting Bracket w/ Leveler</i>
IKT-UVL32UL-AG	<i>UVC Bacterial Disinfection Kit</i>
IKT-SURPRK-DV2	<i>Ultimate Surge and Power Protection</i>