

Job Name:	
Submitted By:	



Submittal Sheet For:	RT024GLSILSFHG / YN024GLSI24RPG
----------------------	--

Date _____

Ref. _____

Ceiling-Concealed Ducted Inverter Heat Pump

System Full Set Model: **RYT024GLSI24RL**

AHRI Reference Number: **217048765**

Cooling Mode Performance

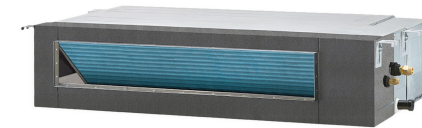
Rated Cooling	22,000 BTU/hr
Ambient Range	5°F ~ 131°F
SEER Rating	19.0 BTU/W·h
EER Rating	11.7 BTU/W·h

* 100% Capacity @ Indoor DB 80°F/WB 67°F

Heating Mode Performance

Rated Heating	25,000 BTU/hr
Ambient Range	-13°F ~ 86°F
HSPF2 IV (V)	9.5 (8.5) BTU/W·h
COP	3.2 (W/W)

*High Heat (47°F) = 25,000 BTU / Low Heat (17°F) = 15,000 BTU / COP (5°F) = 2.0



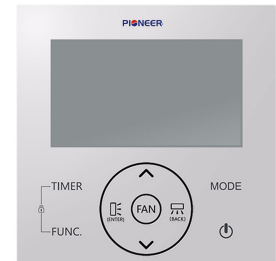
Ceiling-Concealed Ducted Indoor Unit



Outdoor Condensing Unit



Installation Kit (Pipe + Cable)



Handheld Remote Controller

Electrical Information

Rated Input (W)	Cooling	Heating
	1,870	2,030
Rated Current (A)	8.1	8.8
Breaker Needed	25A (Double-Pole)	
Power Supply	208~230V, 1Ph, 60Hz	

Piping and Refrigerant

Liquid Line (OD)	1/4"
Suction Line (OD)	5/8"
Refrigerant Precharge	R454b (Selectable Lineset)
Max Length/Height Diff.	65 ft. / 50 ft.

This combination is
Energy-Star certified.



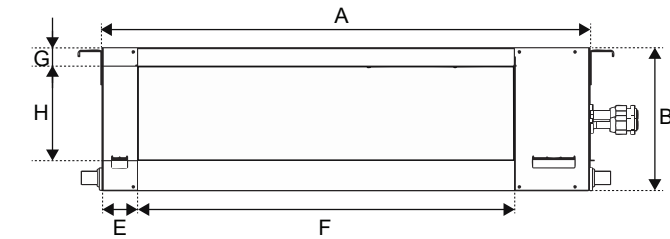
Interior Unit (Air Handler) Specifications

Type	Heat Pump
Sound Level (dBA)	41 (Hi) / 38 (Med) / 34 (Lo)
Auto Air Circulation	2-Way Louver (Up-Down + Left-Right)
Dimensions (WDH)	43"-1/4 x 17"-3/4 x 7"-7/8
Weight (lbs)	50.7

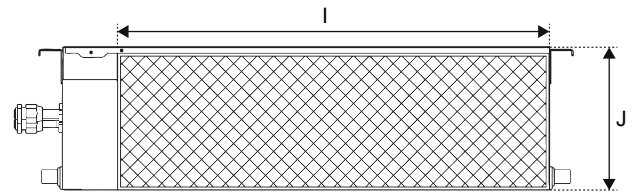
Exterior Unit (Condenser) Specifications

Sound Level (dBA)	54
Recommended Room Size	750~1,000 Sq. ft.
Minimum Room Size	62 Sq. ft.
Compressor	Inverter-Driven Rotary
Dimensions (WDH)	38"-1/2 x 16"-5/8 x 31"-5/8
Weight (lbs)	104.7

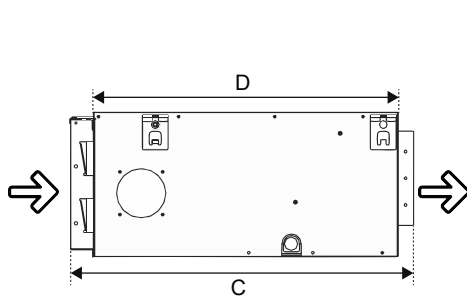
CT024GLSILCFHG Air Handler Dimensional Data



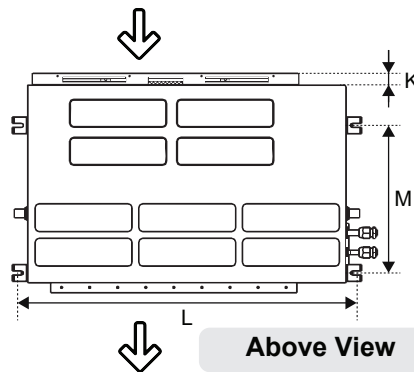
Supply Side



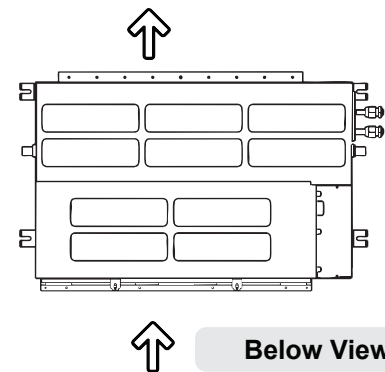
Inlet Side



Side View

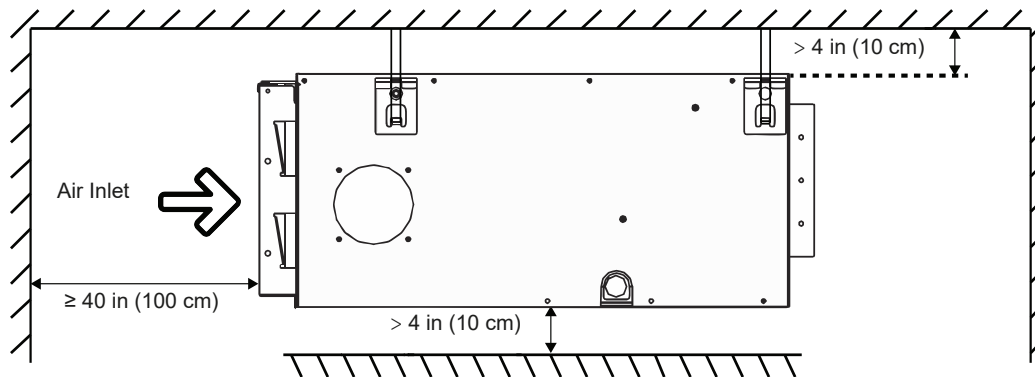


Above View

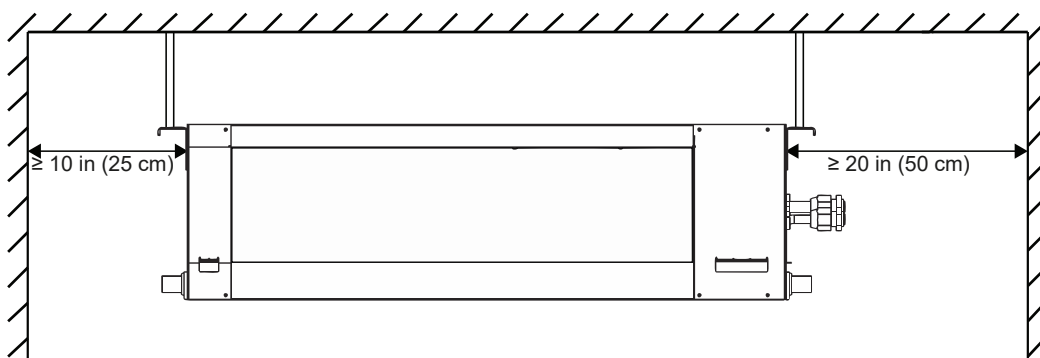


Below View

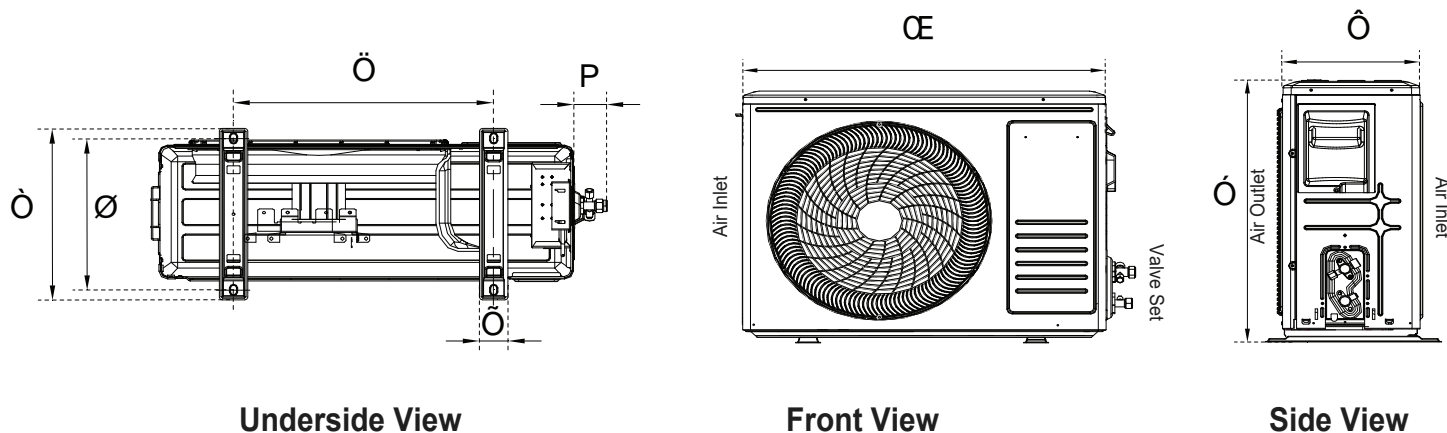
24K	Overall Air Handler Dimensions				Front Side Air Outlet (Supply)				Rear Side Air Inlet (Return)			Mounting Brackets	
	A	B	C	D	E	F	G	H	I	J	K	L	M
	43-3/4 in	7-7/8 in	19-3/8 in	17-3/4 in	1-1/8 in	36-5/8 in	1/8 in	5-1/2 in	40-5/8 in	7-1/4 in	1-3/8 in	37-7/8 in	14-3/8 in
	1,110.1 mm	200 mm	492.1 mm	450.9 mm	28.6 mm	930.3 mm	3.2 mm	139.7 mm	1,030.3 mm	182.6 mm	34.9 mm	960.4 mm	365.1 mm



Side View



Front View



Model	A	B	C	D	E	F	G	H
YN024GLSI24RPG	910 mm	803 mm	359 mm	607 mm	421 mm	390 mm	60 mm	63 mm
	35-7/8"	31-5/8"	14-1/8"	23-7/8"	16-5/8"	15-3/8"	2-3/8"	2-1/2"

Warranty Information and Length



Complete warranty details are available with the vendor or online at <https://www.pdhvac.com/support/warranty/>. This high-quality system is eligible for up to a 5-year limited warranty on the compressor, and 5 years on other internal parts. To qualify for this warranty, the system must be installed within 90 days and registered properly. All other installations that are unregistered qualify for only 1-year parts/compressor warranty.

Outstanding Features

- LED Display
- Energy Saving
- Ultra-Thin Design
- Dual Drain Options
- Customizable Timer
- Eco-Friendly Refrigerant
- Whisper-Quiet Operation
- Power Loss Memory Recovery

Available Accessories

Part Number	Description
IKT-LCVR4P-KIT	<i>Decorative PVC Line Cover Kit</i>
IKT-LNBR-1/4-3/8	<i>BendAid Flexible Easy Bender Kit</i>
BRK-FRM-C-2P	<i>Folding Mounting Bracket w/ Leveler</i>
IKT-UVL32UL-AG	<i>UVC Bacterial Disinfection Kit</i>
IKT-SURPRK-DV2	<i>Ultimate Surge and Power Protection</i>