

# Inverter Air Conditioner Indoor/Outdoor Units Disassembly Manual

## Models:

**WYT012ALUI17RL**

**WYT012GLUI17RL**

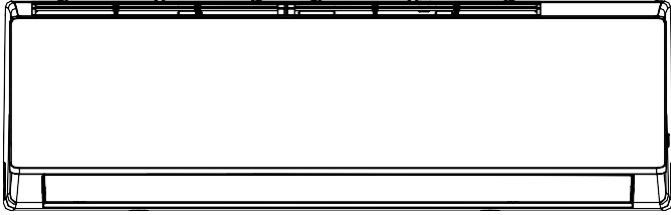
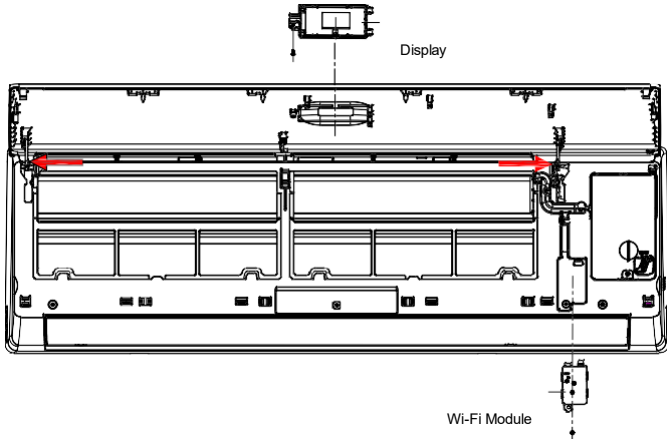
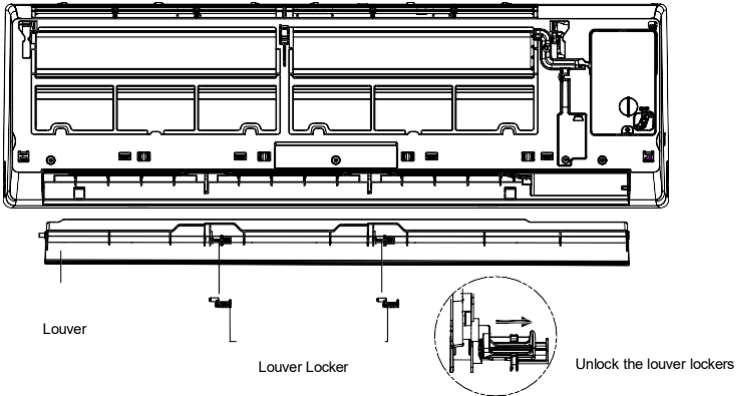
**WYT018GLUI17RL**

**WYT024GLUI17RL**

**WYT036GLUI17RL**

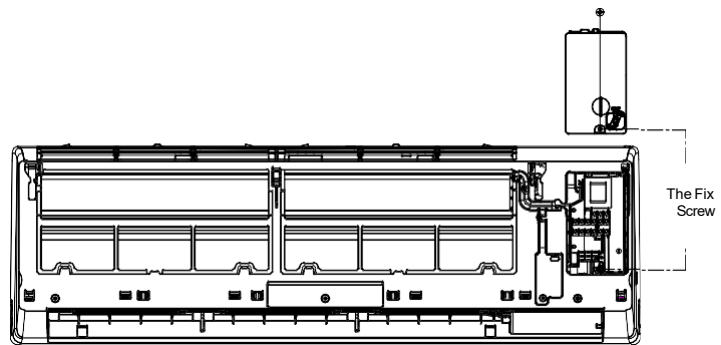
## IDU Disassembly

IDU Model Numbers: WT012ALUI17HLD | WT012GLUI17HLD | WT018GLUI17HLD  
WT024GLUI17HLD | WT036GLUI17HLD

Steps	Reference Photo
1. Before disassembly	
<p>The original status.</p>	
2. Disassemble the front panel, display board, and Wi-Fi module	
<p>A. Open the front panel.</p> <p>B. Remove 1 screw, then take the display box out from the panel.</p> <p>C. Release the panel axis, which is shown in red arrows, out from the middle frame and take the panel out.</p> <p>D. Unscrew and remove the Wi-Fi module from the middle frame.</p>	
3. Remove the louver	
<p>Unlock the louver lockers (clip). Bend the louver slightly by hands and remove it from the middle frame and stepping motor.</p>	

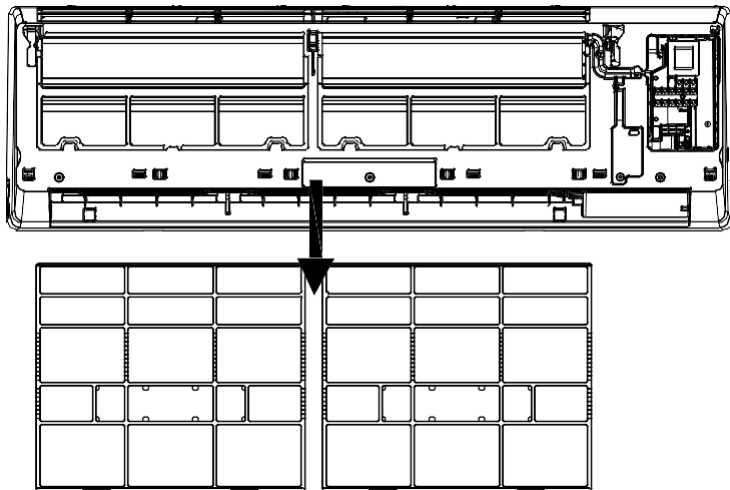
## 4. Remove the electric control box cover

Unfix 1 screw on the electric box cover, then remove the cover.



## 5. Remove the filter

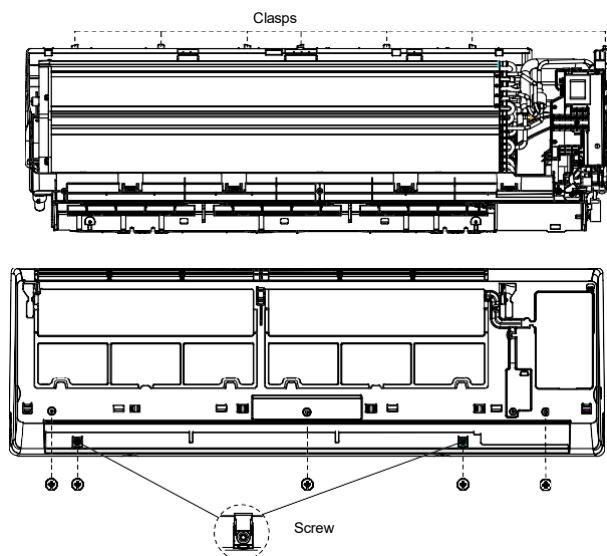
Push the filter upwards a little.  
You can take it out from the unit.



## 6. Disassemble the middle frame

A. Open the screw cover and unfix the screw with a cross screwdriver.

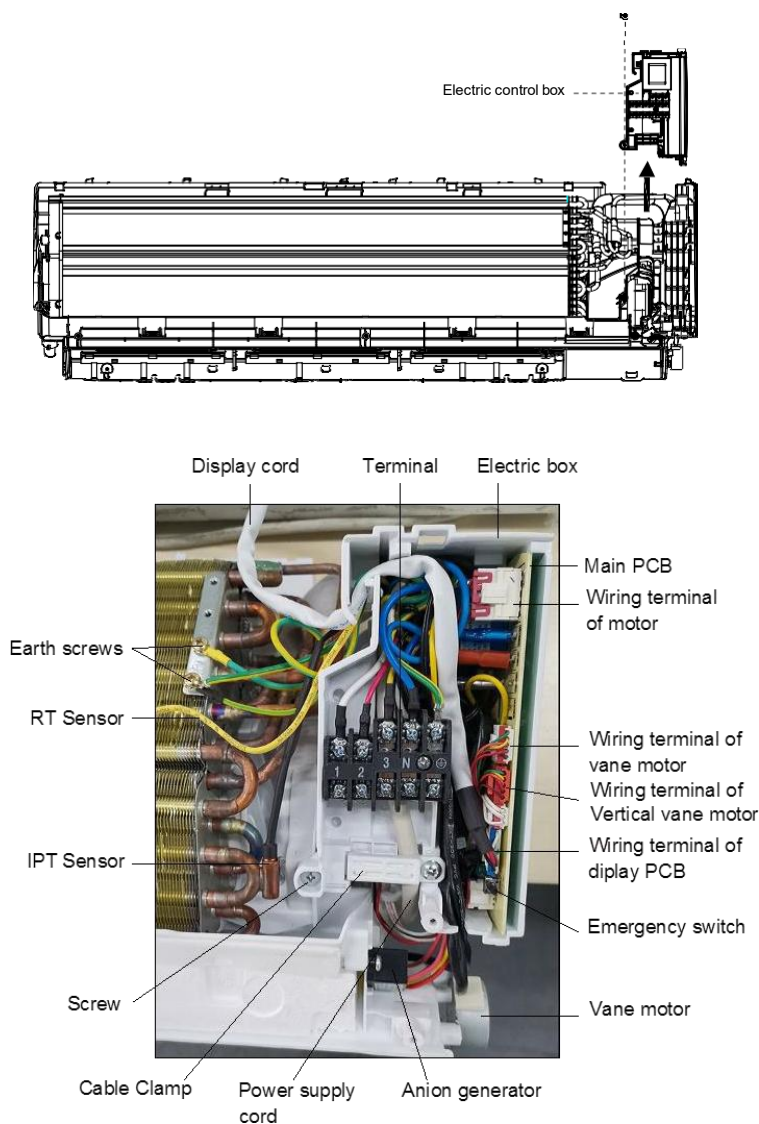
B. Remove the middle frame by loosening the clasps of the unit base, as shown in the picture. Take the frame out.



## 7. Disassemble the electric control box

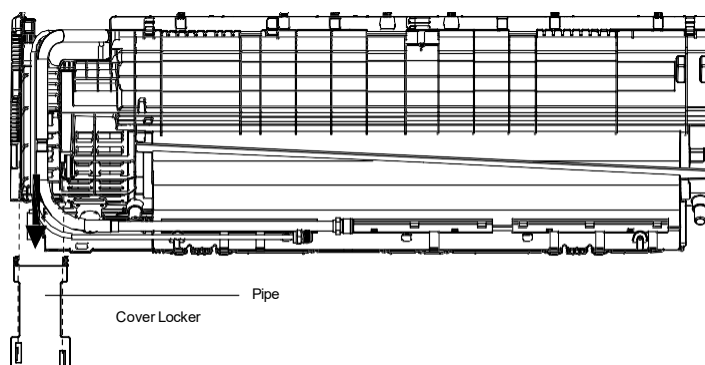
- A. Remove the RT and IPT from the evaporator.
- B. Unscrew all the earth ground wirings on the evaporator.
- C. Take all the connectors out from the PCB.
- D. Unfix 1 screw from the control box of the unit base frame. Remove the control box from the unit.

**Note:** The picture on the right is for your reference only. The wiring connection for the exact model may be slightly different.



## 8. Remove the pipe cover

Loosen the lower edge of the pipe cover from the base frame, then remove the cover from the unit.

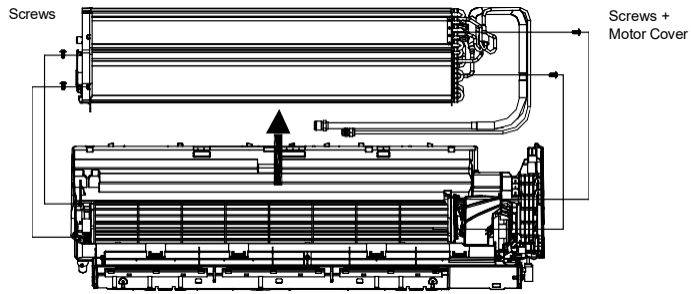


## 9. Disassemble the evaporator

A. Unfix 2 screws on the left side, as shown as picture.

B. Unfix 2 screws on the right side of the motor cover/right support plate.

C. Take the evaporator out from the unit by uplifting the input/output pipes slightly.



## 10. Remove the motor cover

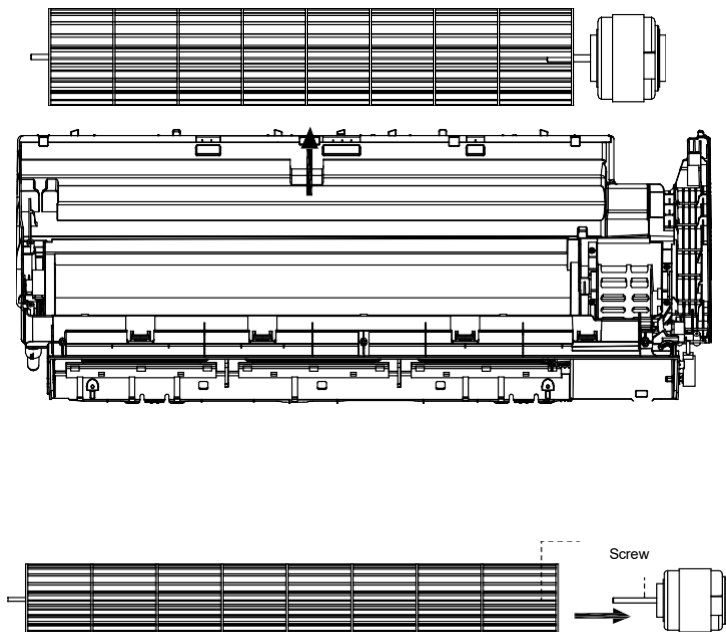
Unfix 4 screws on the motor cover of the base frame.



## 11. Disassemble the fan motor and fan blade

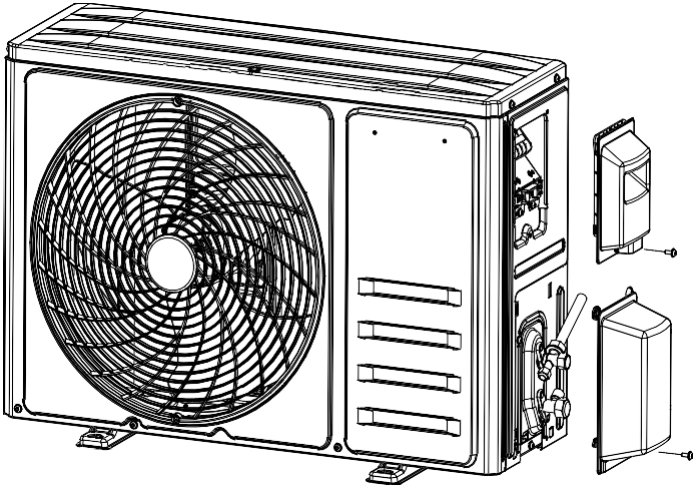
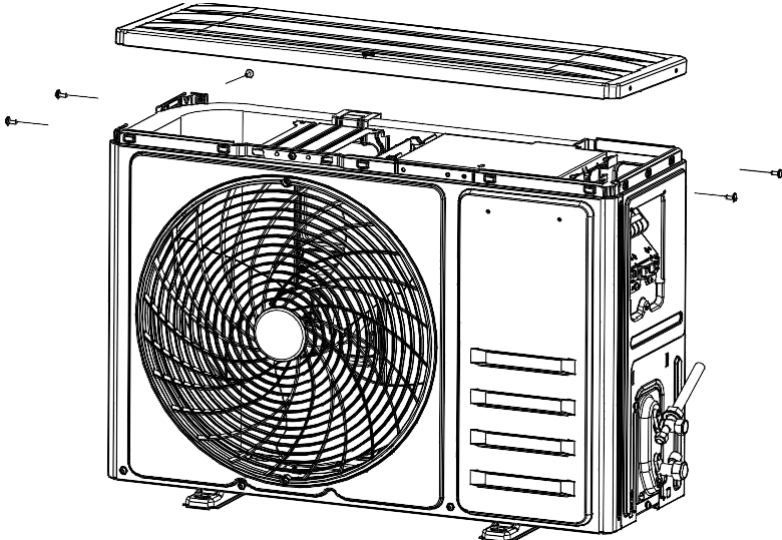
A. Lift the fan blade and fan motor. Take the base frame out.

B. Unfix 1 screw on the axis of fan motor, then you can separate the fan blade and fan motor.



## ODU Disassembly

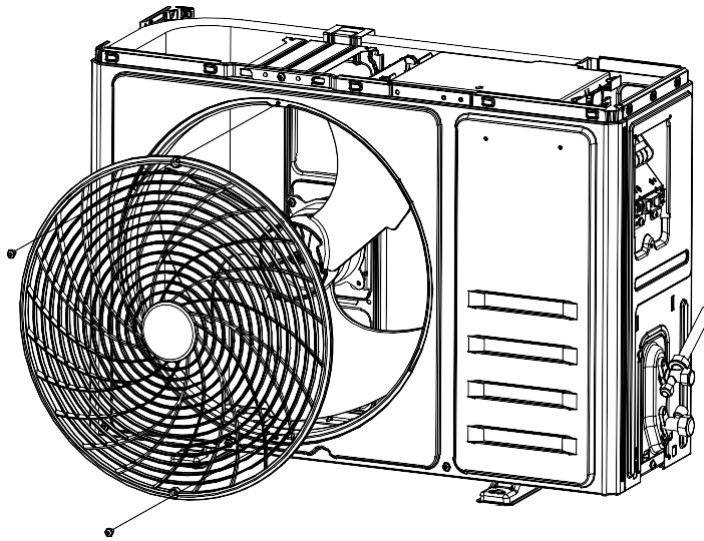
ODU Model Numbers: YN012ALUI17RPD | YN012GLUI17RPD | YN018GLUI17RPD  
YN024GLUI17RPD | YN036GLUI17RPD

Step	Reference Picture
1. Remove the PCB cover, valve cover, and top cover	
<p>A</p> <p>1). Unfix 1 screw on the PCB cover, then you can remove the cover from the unit.</p> <p>2). Unfix 1 screw on the valve cover, and then you can take it out.</p>	
<p>B</p> <p>Unfix the screws on the top/left/right plates, and then you can take the top cover out.</p>	

## 2. Disassemble the fan guard and front panel

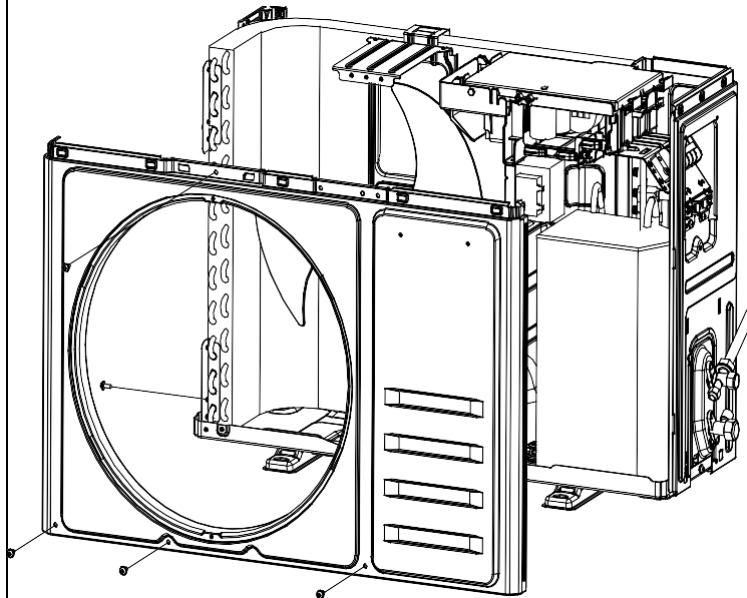
A

Unfix the screws on the front panel of the fan guard.



B

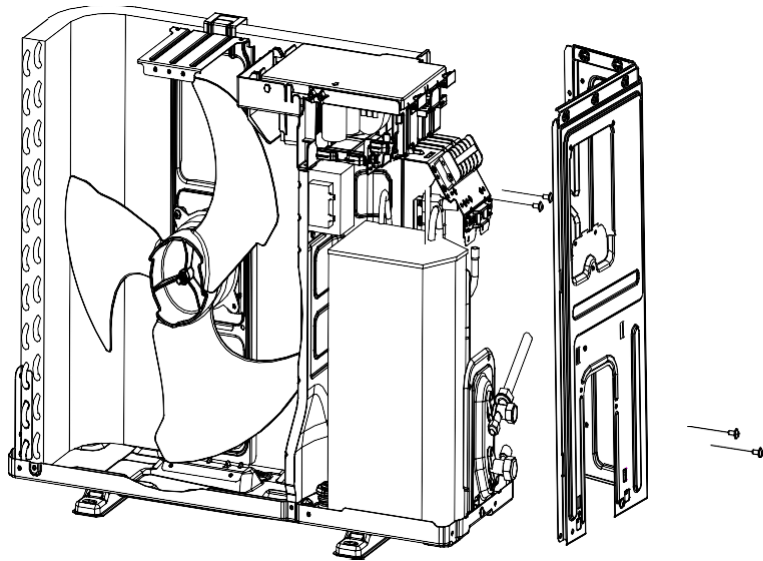
Separate the ODU middle plate and base plate. Lift the front panel so you can take it out from the unit.



## 3. Disassemble the left and right plate

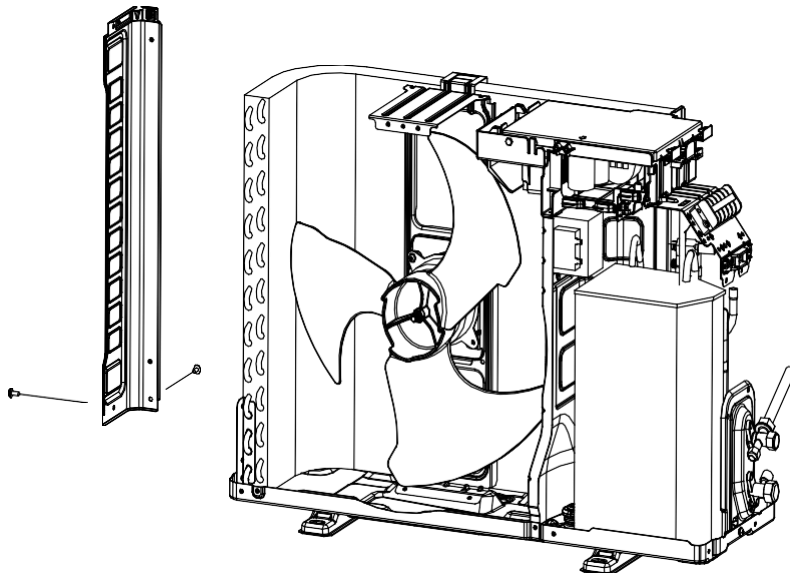
A

Unfix the screws on the right plate, electric box assembly, valve plate, and base plate. You can then take the right plate out.



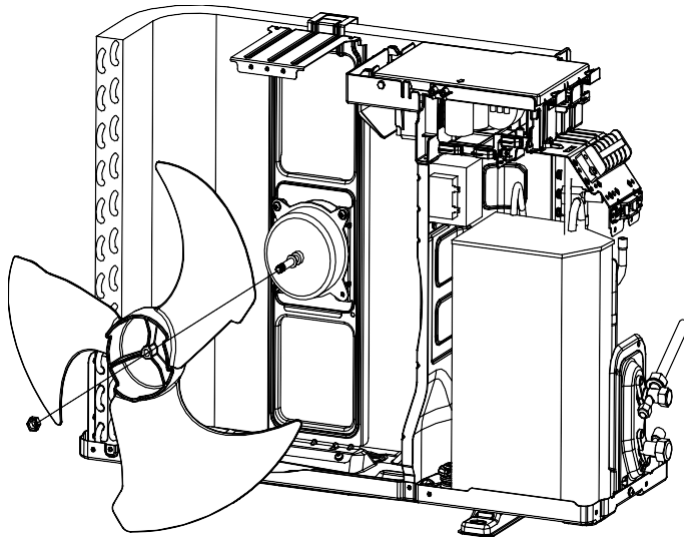
B

Unfix the screws on the left plate, base plate, and condenser plate. You can then take the left plate out.



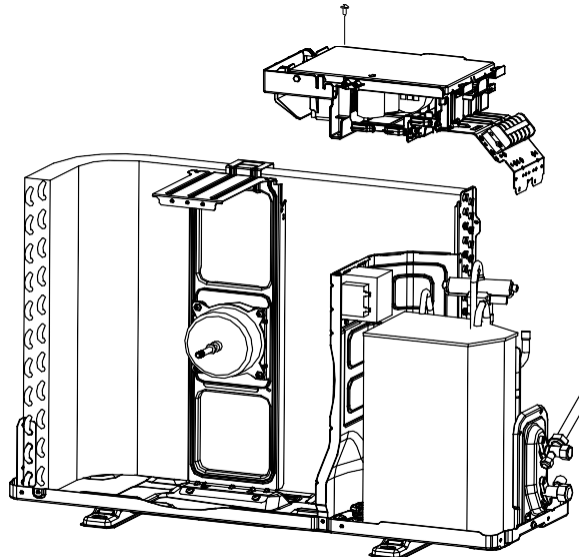
## 4. Disassemble the axis fan blade

A Unscrew the fan blade nut. Remove the blade.



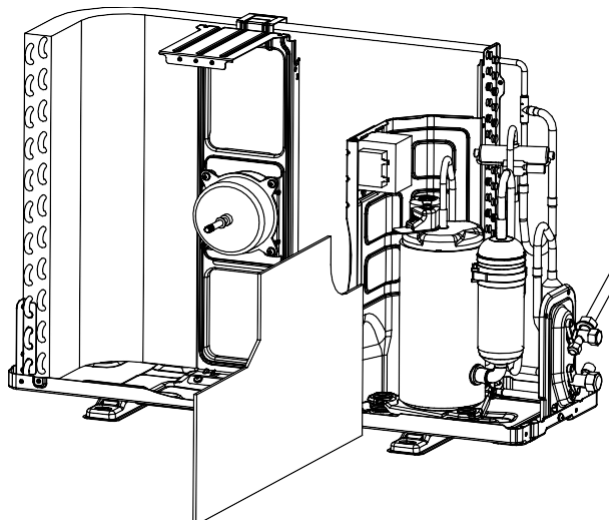
## 5. Disassemble the electric box

A Unfix the screws on the electric box and motor supporter, etc. Loosen the wiring clamp, then you can take the control box out.



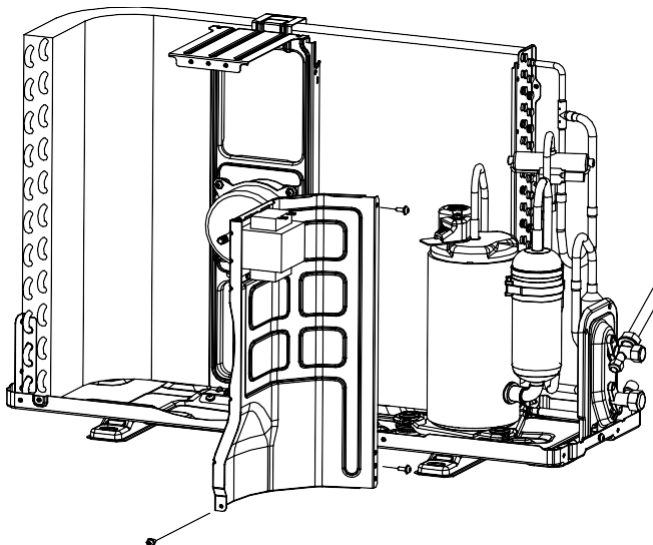
## 6. Remove the noise cotton

A Take the cotton out, as shown in the picture.



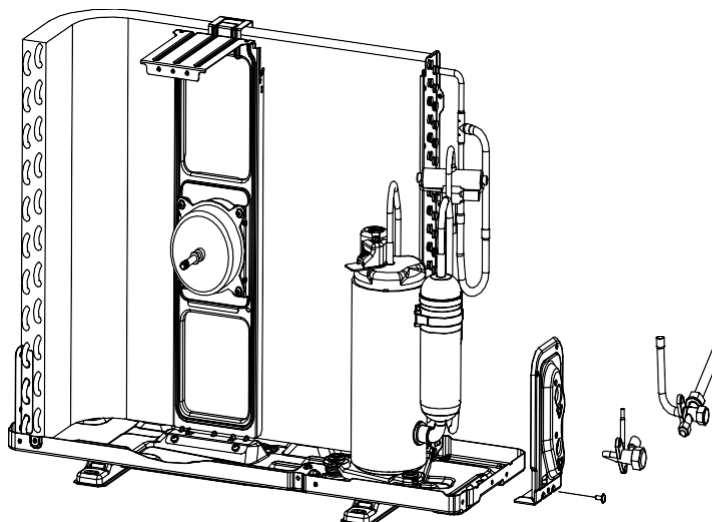
## 7. Disassemble the separate plate

- A Unfix the screw on the separate plate and unit, then take it out.



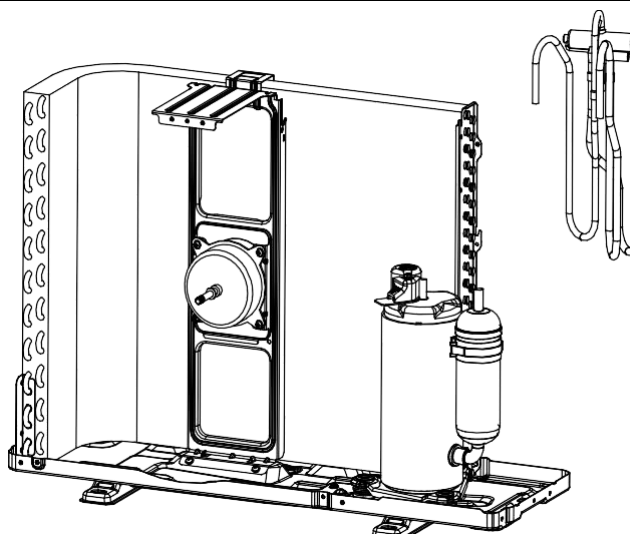
## 8. Disassemble the 2-way and 3-way valve

- A Unfix the screws on the valve plate and base. You can take the 2-way and 3-way valve out by welding.
- Note:**  
1). Welding can only occur while there is no gas in the unit.  
2). Pay attention to the fire to prevent any injury.



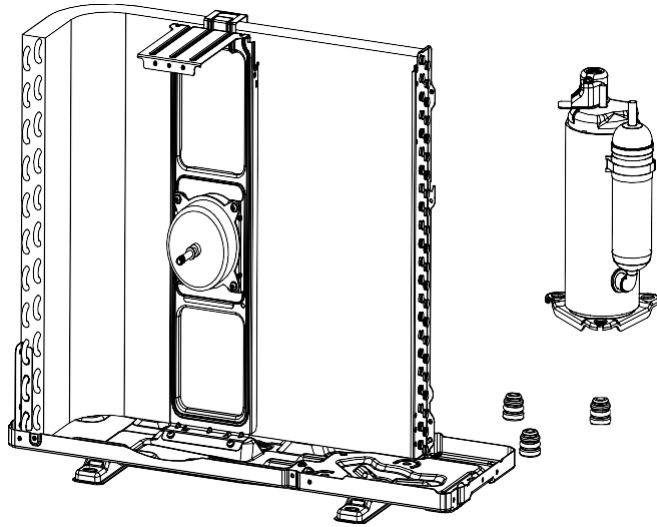
## 9. Disassemble the 4-way valve assembly

- A Remove the 4-way valve from the system by welding. Ensure there is no damage to the compressor, nameplate, etc.



## 10. Disassemble the compressor

A Unscrew the nuts and remove the compressor.



## 11. Remove the fan motor and fan supporter

A Unfix the screws on the fan motor and supporter, then remove the supporter of the base plate.

**Note:** Pay attention to the motor wiring. It can't be taken out by force.

