

Features:

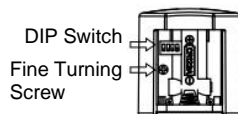
1. Transmission Distance: 0-20FT
2. Power Supply: DC5V/0.5A Adapter or CR123A/3V Battery
3. Dimension: \varnothing 2 in. * 2 in.
4. Operation Temperature: 5°~131° F
5. Suitable for all kinds of air conditioner that have infrared control.

Operation Guide:

1. Adjust Detection Sensitivity

- A. Turn on power, and the indicator light will flicker in red for 8 times and in another color for twice (This color indicates the PIR detection sensitivity, please refer to the following table for the sensitivity VS indicator light color).

PIR Sensitivity	Light Color
I (Highest Sensitivity)	White
II	Purple
III	Blue
IV	Green
V (Lowest Sensitivity)	Red



- B. Rotate the Fine Turning Screw of the potentiometer to adjust sensitivity for different demands.

2. Code Learning

- A. Please make sure the air conditioner is OFF before code learning.
- B. Press and hold the ON button of PIR-K390A-PD about 2 seconds until the light is constantly on in blue.
- C. Point the regular IR remote control of air conditioner to the PIR lens, and press ON button of the IR remote control within 3 seconds. If the indicator light flickers in green for 3 times, it means that learning code is successful, and if the indicator light flickers in red for 3 times, it means that learning code is unsuccessful, then you should follow the above steps to relearn the code.
- D. Similarly, you can press the OFF button of PIR-K390A-PD to learn and save the OFF code according to the above steps.
- E. To double check if the ON/OFF code is learned successfully, press ON/OFF button of PIR-K390A-PD to turn on/off the air conditioner.
- F. After successfully learning the ON and OFF code, you should wait 2 minutes default time.

3. Delete the IR remote control codes

Press and hold the ON/OFF button of PIR-K390A-PD, the light will be constantly on in blue. Release the button, and the IR codes are deleted successfully.

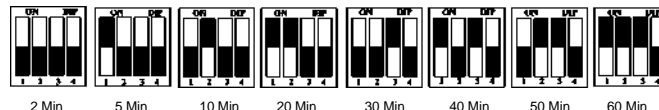
4. Auto ON/OFF Mode and Auto OFF Mode

Auto ON/OFF Mode: Set DIP switch 4 to "ON" position (Factory Settings). When detecting someone in the working range, the air conditioner will be turned on and begins to calculate the delay off time. If the first person leaves but the second person enters the working range, the delay off time do not run out, the air conditioner will keep working and delay off after the second person leaves.

Auto OFF Mode: Set DIP switch 4 to "OFF" position. Turn on air conditioner manually and turn off air conditioner automatically after a preset delay-of time when it detects no human motion. If human motion are detected again during the countdown, the delay off time will be cleared, and the air conditioner will remain on.

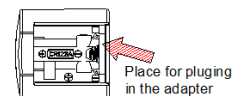
5. Setting Delay off Time

The 4 dip switches are used to set the delay off time to 8 settings based on different combinations. Each combination corresponds to a delay off setting. Please check the following diagram for DIP position VS delay off time.

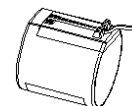


Installation Guide:

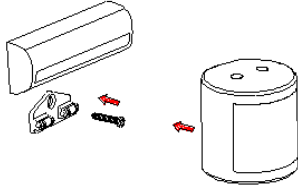
1. Remove the back cover, and install the battery or plug in the adapter.



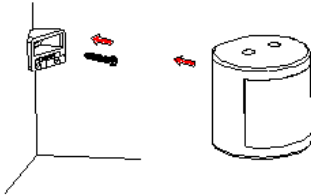
The Power cord of adapter can be fixed on the back cover according to the following diagram.



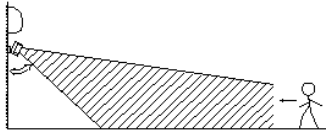
2. Fixing the installation base on the wall with screw, and hang PIR-K390A-PD on the base.



3. Fixing the installation base in the corner of the wall with screw, and hang PIR-K390A-PD on the base.



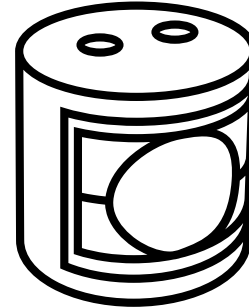
4. Users can adjust the installation angle to achieve best detection performance.



Caution:

Installation must be done by qualified personnel only. Follow safety measures to avoid electric shock.

PIONEER®
AirSense



PIR-K390A-PD

Motion Detecting Smart Switch

PASSIVE IR · ADJUSTABLE DELAY · MULTI-POWER SOURCE